

STEP AFRIKA!'S MAGICAL MUSICAL HOLIDAY STEP SHOW



2023/24 SEASON



NEXT AT ARENA STAGE

SWEPT AWAY

BOOK BY JOHN LOGAN
MUSIC AND LYRICS BY THE AVETT BROTHERS
CHOREOGRAPHED BY DAVID NEUMANN
DIRECTED BY MICHAEL MAYER
BY SPECIAL ARRANGEMENT WITH MATTHEW MASTEN,
SEAN HUDOCK, AND MADISON WELLS LIVE
NOW – DECEMBER 30

MINDPLAY

CREATED AND PERFORMED BY VINNY DePONTO
WRITTEN BY VINNY DePONTO AND JOSH KOENIGSBERG
DIRECTED BY ANDREW NEISLER
PRODUCED BY EVA PRICE
JANUARY 19 – MARCH 3

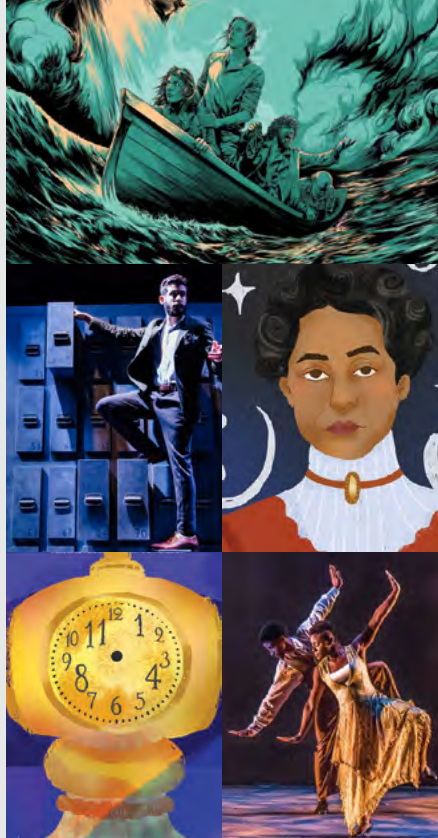
TEMPESTUOUS ELEMENTS

BY KIA CORTHON
DIRECTED BY PSALMAYENE 24
FEBRUARY 16 – MARCH 17

UNKNOWN SOLDIER

BOOK BY DANIEL GOLDSTEIN
MUSIC BY MICHAEL FRIEDMAN
LYRICS BY MICHAEL FRIEDMAN AND DANIEL GOLDSTEIN
DIRECTED BY TRIP CULLMAN
BY SPECIAL ARRANGEMENT WITH HUNTER ARNOLD
MARCH 29 – MAY 5

THE MIGRATION:
REFLECTIONS ON JACOB LAWRENCE
BY STEP AFRIKA!
JUNE 6 – JULY 14



BIGGER
BOLDER
— & —
BETTER THAN
EVER!



Swept Away artwork by Ken Taylor. Mindplay photo of Vinny DePonto by Jeff Lorch. Tempestuous Elements and Unknown Soldier illustrations by Loveis Wise. The Migration photo by William Perrigen.

STEP AFRIKA!'S MAGICAL MUSICAL HOLIDAY STEP SHOW

TABLE OF CONTENTS

- 5 Arena Stage Leadership Note
- 7 Step Afrika! Founder's Note
- 9 About Step Afrika!
- 11 Title Page
- 13 Program / Company / For This Production
- 15 Bios — Company
- 19 Bios — Creative
- 20 Bios — Arena Stage Leadership
- 23 Board of Trustees / Young Patrons Board
- 25 Thank You — Full Circle Society
- 27 Thank You — Individual Donors
- 33 Thank You — Institutional Donors
- 34 Theater Staff

ARENA STAGE
1101 Sixth Street SW
Washington, DC 20024-2461
ADMINISTRATION 202-554-9066
SALES OFFICE 202-488-3300
arenastage.org

©2023 Arena Stage.
All editorial and advertising material is fully protected and must not be reproduced in any manner without written permission.

Step Afrika!'s *Magical Musical Holiday Step Show* program book published December 8, 2023.

Cover photo by Margot Schulman.

PROGRAM BOOK STAFF

Elizabeth Hawks,
Director, Marketing &
Communications

Ryan Impagliazzo,
Associate Director, Marketing &
Communications

Shawn Helm,
Graphic Designer

ARENA STAGE MISSION

Arena Stage is the voice of American theater resident in our nation's capital. Focused on American artists, our productions are innovative and representative of stories from across the country. We nurture new plays and reimagine classics. We celebrate our democracy and diversity through a multitude of voices in our productions and community engagement programs to inspire people to action. We produce all that is passionate, exuberant, profound, entertaining, deep and dangerous in the American spirit.



Photo by Nic Lehoux courtesy of Bing Thom Architects.



Arena Stage is built on the land of the Piscataway people of the Algonquin-speaking tribes, as well as the lands of the Native American people of the greater Anacostia, Potomac, and Tidewater regions.

ARENA STAGE LEADERSHIP NOTE

Season's Greetings!



Whether you're reveling in the magic of Christmas, honoring the sacred traditions of Hanukkah, or embracing the rich heritage of Kwanzaa, I hope this note finds you warmed by the joy the holiday season brings. I'm particularly delighted you've chosen to infuse an extra dose of merriment into your holiday festivities by joining Step Afrika! and Arena Stage for the energetic and enchanting Step Afrika!'s *Magical Musical Holiday Step Show*.

This vibrant holiday tradition, now in its second year at Arena Stage (and its second decade of delighting audiences with its trademark combination whimsy and virtuosity), is a true gift to D.C. that connects audiences across generations in collective delight as they marvel at Step Afrika!'s singular skill. I eagerly anticipate sitting down in the Fichandler, flanked by my parents and my children to experience this incredible show for the very first time.

I envision the festive atmosphere, the rhythmic beats reverberating through the theater, and the toes tapping in sync with the mesmerizing performances unfolding before our eyes. This is so much more than just a show; it's a jubilant celebration of culture, talent, and the unifying spirit that invigorates us each and every holiday season.

As you laugh, dance, and sing, I have no doubt the magic of Step Afrika! will add an extra sparkle to your holiday celebrations and ignite lasting memories to be cherished for years to come.

Once again, thank you for choosing to join us for this extra-special experience. May all your holidays overflow with laughter, love, and the unparalleled joy of sharing moments with those you love.

Wishing you a season filled with warmth, happiness, and delight,

Hana S. Sharif
Artistic Director, Arena Stage



STEP AFRIKA! FOUNDER'S NOTE

Dear Friends,



Welcome to Step Afrika!'s Magical Musical Holiday Step Show!

After a year filled with incredible performances and meaningful arts education programming, we are thrilled to bring this joyous annual tradition to our home in Washington, D.C., at the enchanting Arena Stage. The Fichandler is truly a magical place, providing the perfect backdrop for our highly interactive production. **Step Afrika! crafted**

this performance for both the young and the young at heart, creating a space where everyone can play, sing along, make music, and dance! This time of year is extra special for me, and after months of energetic touring across the USA, I can't wait for you to welcome home the celebrated artists of Step Afrika!. Trust me, the more noise you make, the more fun we'll have! Who wants to stay still and quiet during the holidays, *right?*

Be sure to stop by our marketing table in the lobby to learn more about **Step Afrika!'s 30th anniversary season**, including upcoming performances of *The Migration: Reflections on Jacob Lawrence* in June, and registration for our amazing summer camp, **Summer Steps with Step Afrika!**, both happening at Arena Stage in 2024!

Step Afrika! never tires of serving the community, and we're thrilled to have you with us. Visit stepafrika.org to explore our work on stages and in schools, and join our newsletter for updates from D.C. and beyond. Thank you for choosing to spend your holidays with us! **Wishing you a season filled with joy and all your favorite things.**

Best wishes,

C. Brian Williams

Founder & Executive Producer, Step Afrika!

STEP AFRIKA!

ABOUT

Founded in 1994 by C. Brian Williams, Step Afrika! is the first professional company dedicated to the tradition of stepping. Under Mr. Williams' leadership, stepping has evolved into one of America's cultural exports, touring more than 60 countries across the globe and ranking as one of the top 10 African American Dance Companies in the US.

Step Afrika! blends percussive dance styles practiced by historically African American fraternities and sororities; traditional African dances; and an array of contemporary dance and art forms into a cohesive, compelling artistic experience. Performances are much more than dance shows; they integrate songs, storytelling, humor, and audience participation. The blend of technique, agility, and pure energy makes each performance unique and leaves the audience with their hearts pounding.

Step Afrika! promotes stepping as an educational tool for young people, focusing on teamwork, academic achievement, and cross-cultural understanding. The Company reaches tens of thousands of Americans each year through a 50-city tour of colleges and theaters and performs globally as Washington, DC's one and only Cultural Ambassador.

Step Afrika! has earned Mayor's Arts Awards for Outstanding Contribution to Arts Education, Innovation in the Arts, Excellence in an Artistic Discipline, and Excellence in the Performing Arts, and was inducted into the National Association of Campus Activities (NACA) Hall of Fame, the first Dance Company to earn this honor. Step Afrika! headlined President Barack Obama's Black History Month Reception and performed at the first ever Juneteenth Celebration at the White House. The Company is featured prominently at the Smithsonian's National Museum of African American History & Culture with the world's first stepping interactive exhibit.

ADMINISTRATIVE TEAM

C. Brian Williams, *Founder & Executive Producer*

Lamar Lovelace, *Executive Director*

Mfoniso Akpan, *Artistic Director*

Conrad R. Kelly II, *Assistant Artistic Director*

Stacy Burwell, *Director, Administration and Special Projects*

Artis Olds, *Director, Arts Education and Community Programs*

Margo Cunningham, *Marketing Manager*

Dana Weinstein, *Manager, Institutional Relations and Research*

Vanessa Hall, *Company Manager*

LEARN MORE



Scan the QR code or
visit stepafrika.org
to learn more!

**Proudly Shaping
the Local Landscape**



ARENA STAGE

HANA S. SHARIF, ARTISTIC DIRECTOR | EDGAR DOBIE, EXECUTIVE PRODUCER

PRESENTS

STEP AFRIKA!'S MAGICAL MUSICAL HOLIDAY STEP SHOW

DIRECTED BY
MFONISO AKPAN

FOUNDER & EXECUTIVE PRODUCER, STEP AFRIKA!
C. BRIAN WILLIAMS

ARTISTIC DIRECTOR, STEP AFRIKA!
MFONISO AKPAN

ASSISTANT ARTISTIC DIRECTOR
CONRAD R. KELLY II

LIGHTING DESIGNER &
PRODUCTION MANAGER
MARIANNE MEADOWS*

ASSOCIATE LIGHTING DESIGNER
YANNICK GODTS

Step Afrika!'s *Magical Musical Holiday Step Show*
is made possible through generous funding from



This production was also made possible by the
DC Commission on Arts and Humanities.

We are grateful to Destination DC for their promotional support of this production.

*Member of the United Scenic Artists Local USA 829

The videotaping or other video or audio recording of this production is strictly prohibited.
Please turn off all electronic devices. Eating and drinking are not permitted inside the theater.



PROGRAM / COMPANY / FOR THIS PRODUCTION

PROGRAM

1. Jabulani!
2. March of the Nutcrackers
3. The Arctic Step Challenge
4. DJ Nutcracker's Yuletide Step Workshop
5. We Stroll, We Step
6. Snow Day
7. Home for the Holidays.

SPECIAL NOTE: Audience participation has been a part of the step tradition since its inception in the 1900s. Members of the audience are invited to clap, stomp, cheer and participate in call and response with the Company.

COMPANY *(in alphabetical order)*

Kenneth L. Alexander Nya Christian Jerod Coleman
 Ariel Dykes Keomi Givens Jr. Kamala Hargrove Nepri James
 Terrence Johnson Conrad R. Kelly II Isaiah O'Connor Na'imah Ray
 Valencia Odeyka Emonni Springer Ericka Still Brie Turner
 Joseph Vasquez Pelham Warner Jr. Robert Warnsley
 with special guest: Jeeda Barrington

FOR THIS PRODUCTION

Show Caller..... CHRISTI B. SPANN
 Scenic and Lighting Designer MARIANNE MEADOWS
 Associate Designer..... YANNICK GODTS
 Production Assistant..... HOWARD BOLDEN, TREVION WALKER
 Props Technician ABBY FRY
 Light Board Operator SCOTT FOLSOM
 Audio Engineer ALEX CLOUD
 Wardrobe Supervisors..... ADELLE GRESOCK, TYQURIA FOUNTAIN

ENJOYING THE SHOW?

We ❤️ seeing your experience at Arena on social media! Give us a follow, like, or tag and we'll 🙌 you back! 😊

TAG US:

 /arenastage /StepAfrika1994

 @arenastage @stepafrika

 @arenastage @stepafrika

 @arenastage @StepAfrikaHQ

TALK ABOUT US:

#ArenaStepShow #ArenaStage #ArenaStageDC
#StepAfrika #DCTheatre #ACreativeDC #MyDCCool
#ExperienceDC #VisitDC #Only1DC

WHO'S WHO

COMPANY



KENNETH L. ALEXANDER is a native of Savannah, GA, with a BFA in Interior Design from Valdosta State University. First introduced to stepping through the Sigma Beta Club, Kenneth went on to become a proud member of Phi Beta Sigma Fraternity Inc. He has taught and performed in and around Tampa Bay, FL, and most recently had the honor of performing at the Super Bowl LV Halftime Show. This is Kenneth's first season with the Company.



NYA CHRISTIAN is a native of Cleveland, OH, with a Bachelor of Arts in Political Science, Sociology and Dance Arts from Howard University. A member of Alpha Kappa Alpha Sorority, Incorporated, she has served as the Alpha Chapter Parliamentarian, Step Mistress, and Stroll Captain. Nya has choreographed works for Taste of Howard, the White House Initiative on HBCU Step performance, Howard University's 2022 Homecoming Step Show performance, DC- based Black History Month performances, and the 2023 North Atlantic Regional Step Show's winning number. She has also represented the Howard University National Panhellenic Council and her Sorority on *Good Morning America* for "The story of 9 historically Black fraternities and sororities" segment during Black History Month. This is Nya's first season with the Company.



JEROD COLEMAN is a native of Columbus, GA, with a BA in History from the University of South Alabama. A member of the Theta Delta chapter of Alpha Phi Alpha Fraternity, Inc., he has served as both step and stroll master. Jerod has performed with the Atlanta Braves, Atlanta Falcons, Redbull Dance Your Style, and DreamHack ATL entertainment teams. He taught at Thomas H. Brewer Elementary School in Columbus, Georgia, where he also ran an all-boys step team called the B.L.U.E. Steppers. This is Jerod's first season with the Company.



ARIEL DYKES is a native of Gainesville, FL, with an Associate of Arts Degree in Musical Theatre from Santa Fe College and a BFA in Dance from the University of Florida. Ariel was introduced to stepping and strolling as a member of the Iota Lambda Chapter of Alpha Kappa Alpha Sorority, Inc., where she choreographed step routines for the chapter and UF's National Panhellenic Council. She has trained in traditional and post-modern dance, jazz, voice, and acting, and has worked with such artists as Ailey Dancers' Nathaniel Hunt and Saman tha Barriento, Tony Award winner Scott Coulter, and Galen Hooks. This is Ariel's second season with the Company.



KEOMI GIVENS JR. is a native of Miami, FL, where he trained with Ricardo Dume, Traci Young-Byron, Jakari Sherman, Conrad Kelly II, Tanisha Cide I, Maribel Trujillo, and Robert Battle. He has studied at the New World School of the Arts and the Mahogany Dance Theatre, where he served as a Rehearsal Director and choreographer. Keomi has danced with Gravity Dance Troupe and Young Contemporary Dance



BOOK YOUR NEXT CELEBRATION AT THE MEAD CENTER

rentals@arenastage.org | 202-600-4099 | arenastage.org/rentals

WHO'S WHO

Theatre (YCDT) and has previously toured nationally with Step Afrika! as a guest artist. In addition to his exceptional work as a dancer, Keomi has choreographed for the legendary 100 Of Florida A&M University, RickyDanco, and Booker T Washington Lady Twisters. This is Keomi's first season with the Company as a full-time artist.



KAMALA HARGROVE is a native of the Bronx, NY, with a BA in Mathematics, Theater, and Dance from Trinity College. Kamala studied with the Alvin Ailey School and Dance Theater of Harlem, has appeared in various music videos and live performances. She has performed with artists including Estelle, Mr. Vegas, Wizkid, and French Montana. Kamala has also worked as a Teaching Artist in New York City, teaching elementary, middle, and high school students. This is Kamala's second season with the Company.



NEPRI JAMES is a native of Atlanta, GA, with a BA from North Carolina A&T State University. Step Master for her Alpha Phi Chapter of Alpha Kappa Alpha Sorority Inc., she is known for bringing her step team to victory at the 2018 Homecoming Step Show. Nepri has worked for the Thurgood Marshall College Fund Rise and Contra Tiempo and has previously toured nationally with Step Afrika! as a guest artist. This is Nepri's first season with the Company as a full-time artist.



TERRENCE JOHNSON is a native of Broward County, FL, with a BA in General Studies from the University of Central Florida. Terrence has previously stepped with the ADIMU: Men of Excellence Step Team, and served as a

co-founder, president, and performer with the Hazard Step Team. He is also a 2015 inductee of the UCF Chapter of Progressive Black Men, Inc. This is Terrence's first season with the company as a full-time artist.



CONRAD R. KELLY II is a native of Fort Lauderdale, FL, who studied Criminal Justice at Florida A&M University. Following his time with A&M's Marching 100 and The Strikers, Conrad became a soloist for The Rolle Project in Las Vegas and a dance instructor with Studio 305, where he regularly taught classes in hip-hop, contemporary, and jazz. Conrad has won numerous awards as a choreographer and dancer, and is a two-time recipient of the DC Commission on Arts and Humanities' prestigious Arts and Humanities Fellowship Program. A longstanding member of the Company, Conrad serves as Step Afrika!'s Assistant Artistic Director and most recently choreographed The Movement, an epic tribute to Black Lives Matter and the domino effect of activism experienced in 2020. This is Conrad's seventh season with the Company.



ISAIAH O'CONNOR is a native of Miami, FL, with a BS in Biology from Florida Agricultural and Mechanical University. A student of hip-hop, modern, and urban soul, Isaiah has previously stepped with the Strikers Dance Troupe under the direction of Shepiro Hardemon. This is Isaiah's second season with the Company.



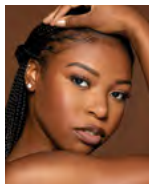
NA'IMAH RAY is a native of New York, NY, with a BFA in Dance from Montclair State University. Na'imah performed as a Centennial Stepper with her sorority, Zeta Phi Beta Sorority

Incorporated, at the Macy's Thanksgiving Day Parade. She has trained with Dwana Smallwood, Earl Mosley, Christian Von Howard, and Beatrice Capote, and participated in dance programs at The Ailey School and Earl Mosley Institute of the Arts. This is her second season with the Company.



VALENCIA ODEYKA EMNONI SPRINGER is a native of Brooklyn, NY, with a BA in Elementary Education from Virginia Union University. Valencia is a proud member of

the Nu Chapter of Zeta Phi Beta Sorority Inc. and the Eta Psi Chapter of Tau Beta Sigma National Honorary band sorority and served as the first "Stand Queen" (captain) with the Ambassadors of Sound Marching Band. Previously a student of Restoration Youth Arts Academy, Valencia has performed with Forces of Nature, Dance Africa (Brooklyn), and as part of a live installation entitled "A Primordial Place." She has also worked as a social studies and science teacher, dance teacher/coach, guest choreographer for local New York/Virginia majorette teams, and as a model for New York and Richmond, Virginia, fashion weeks. This is Valencia's fifth season with the Company.



ERICKA STILL is a native of St. Petersburg, FL, with a BA in Health Science, Pre-Occupational Therapy, and Rehabilitation Management from Florida A&M University. Ericka

previously stepped with AKAdemy Exquisite Gems and studied under the direction of Paulette W. Johnson and Shepiro Hardemon as a member and Co-Assistant Artistic Director of Mahogany Dance Theatre. This is Ericka's second season with the Company.



BRIE TURNER is a native of Lithonia, GA, with a BA in Strategic, Legal, and Management Communications from Howard University. Magna cum laude graduate, Brie

was a member of Zeta Phi Beta Sorority Incorporated's Quintessential Alpha chapter where she served as the Chapter President and stroll mistress, in addition to serving as the co-captain and captain of the Howard University Bisonettes Dance Ensemble. This is Brie's second season with the Company.



JOSEPH VASQUEZ is a native of Guttenberg, NJ, with a BS in Exercise Science from Rutgers University in New Brunswick where he served as a member of

Lambda Sigma Upsilon Latino Fraternity Incorporated. Joseph has led and choreographed for the Bachata Performance Team, and previously performed with The Revels, a stroll team led by Francisco Pozo and Carlos Zapata. This is Joseph's second season with the Company.



PELHAM WARNER JR. is a native of The Bronx, NY, and has a BA from Dutchess Community College. Pelham is a member of The Order of the Feather Fraternity

where he served as the team's Step Master and captain for five years, and has previously danced with The Players Club Steppers. Pelham has worked as a dance instructor in the greater New York City area, and recently performed in the a capella musical *The Movement* by Kathy D. Harrison at The National Black Theater Festival. This is Pelham's fifth year with the Company.



ROBERT WARNSLEY is a native of Chicago, IL, with a BS in Information Technology from Illinois State University. A member of the Eta Tau chapter of Alpha Phi Alpha Fraternity,

Inc., Robert served as the step and stroll master and has organized, competed in, and placed first in numerous step shows. He has taught stepping to the Boys & Girls Clubs of America, and actively participates in community service projects in the city of Chicago, teaching dancehall and various Afro styles in the DMV and NYC areas. This is Robert's fifth season with the Company.

SPECIAL GUEST

JEEDA BARRINGTON is a native of Glenarden, MD, and a graduate of Bowie State University where he earned his Bachelor's in Music Technology and Master's Degree in Human Resources. A member of Phi Beta Sigma Fraternity, Inc., Jeeda has served as the choreographer for various traveling step and "partywalk" teams. He continues his love for rhythms through disc jockeying at events across the United States.

CREATIVE



C. BRIAN WILLIAMS (*Founder and Executive Producer*) is a native of Houston, Texas, and a graduate of Howard University. Brian first learned to step as a

member of Alpha Phi Alpha Fraternity, Inc. - Beta Chapter, in the Spring of 1989. While living in Southern Africa, he began

to research the percussive dance tradition of stepping, exploring the many sides of this exciting, yet under-recognized American art form, and founded Step Afrika! in 1994. Williams has performed, lectured, and taught in Europe, Central and South America, Africa, Asia, the Middle East, the Caribbean, and throughout the United States. Through Williams' leadership, stepping has evolved into one of America's newest cultural exports and inspired the designation of Step Afrika! as Washington, DC's official "Cultural Ambassador." In 2022, the National Endowment of the Arts designated Williams as a National Heritage Fellow, the nation's highest honor in folk and traditional arts. He is the recipient of numerous Artist Fellowships; the World Alive! Distinguished Artist Award by ArtsEmerson; the Mayor's Arts Award for Visionary Leadership from the DC Commission on the Arts and Humanities; Distinguished Arts Award from the Coalition for African Americans in the Performing Arts; and the Pola Nirenska Award for Contemporary Achievement in Dance. He is also featured in *Soulstepping*, the first book to document the history of stepping. He also earned the Mayor's Art Award for Innovation in the Arts and has led the company to multiple Metro DC Dance Awards for "Outstanding New Work," "Excellence in Stage Design/Multimedia," and "Outstanding Group Performance." Williams has been cited as a "civic/community visionary" by *NV Magazine*, a "nation builder" by the National Black Caucus of State Legislators and a "minority business leader" by the *Washington Business Journal*. His work is featured prominently at the Smithsonian Museum of African-American History and Culture in Washington, DC.



LAMAR LOVELACE (*Executive Director*) As Executive Director for Step Afrika!, Lamar Lovelace is responsible for the organization's strategy and operations, leading its staff,

programs, and the execution of its mission. Working closely with Step Afrika!'s board of directors, he spearheads fundraising, marketing, operations, and long-range planning for the organization. He brings deep expertise from academia and has managed the organization's humanities-based partnerships. In July 2017, Lamar joined Step Afrika! as Deputy Executive Director, where he oversaw the dance company's communications and marketing strategy, fundraising efforts, and financial operations. Previously, Lamar spent 8 years at Columbia University as Assistant Director in the Office of Community Outreach and Education and Director of Public Programs and Events. At the New York City-based campus, he managed community-based partnerships and special events and produced large-scale, humanities-based programming opportunities to engage students, faculty, and staff. At Broward College in Fort Lauderdale, Florida, Lamar was Director of Cultural Affairs and Student Engagement, where he created arts-based social justice programs and exhibitions. He holds Master's degrees in Arts Management and Oral History from Carnegie Mellon and Columbia, respectively, and a BA in Speech and Hearing Science from the University of Illinois at Urbana-Champaign. Lovelace is a member of Kappa Alpha Psi Fraternity, Inc.



MFONISO AKPAN (*Artistic Director*) has trained extensively in tap, ballet, jazz, modern, African dance, and step. While attending the State University of New York at

Stony Brook, she majored in biochemistry and cultivated her stepping skills as a

member of Delta Sigma Theta Sorority, Inc. Mfon began her training at the Bernice Johnson Cultural Arts Center and has performed at Carnegie Hall, Avery Fisher Hall, the Apollo Theater, the Brooklyn Academy of Music, and Lincoln Center. Mfon toured with the off-Broadway show *Hoopin' 2 Hittin'*, where she was a featured stepper and dancer.

MARIANNE MEADOWS (*Lighting Designer/Production Manager*) is a member of United Scenic Artists local 829 with a BA from Sarah Lawrence College, MFA from the University of Washington with additional training at Lester Polakov's Studio and Forum of Stage Design, NYC.

Headshots of the Company by Keith Major.

ARENA STAGE LEADERSHIP

HANA S. SHARIF (*Artistic Director*) has enjoyed a multi-faceted theater career, including roles as an artistic leader, director, playwright, and producer with a specialty in strategic and cross-functional leadership. Hana began her professional career as an undergraduate student at Spelman College. From 1997 to 2003, Hana served as the co-founder and Artistic Director of Nasir Productions, a theater dedicated to underrepresented voices challenging traditional structure. Hana joined the Tony® Award-winning regional theater, Hartford Stage, in 2003. During her decade-long tenure at Hartford Stage, Hana served as the Associate Artistic Director, Director of New Play Development, and Artistic Producer. Hana launched the new play development program, expanded the community engagement and civic discourse initiatives, and developed and produced Tony®, Grammy, Pulitzer, and Obie Award-winning shows. Starting in

2012, she served as Program Manager at ArtsEmerson, a leading world theater company based at Boston's Emerson College. During her tenure at ArtsEmerson, Hana launched an Artists in Residency program, led a research program assessing barriers to inclusion across the region, and leveraged her regional theater experience to freelance produce for smaller theater companies looking to expand and restructure their administrative teams. Hana was Baltimore Center Stage's Associate Artistic Director from 2014 to 2019 and was the architect of the innovative CS Digital program: a platform that pushes the boundaries of traditional theater and looks at the nexus point between art and technology. Her other achievements at Baltimore Center Stage included prototyping the Mobile Unit focused on historically underserved audiences, strengthening community engagement, producing multiple world and regional premieres, and helping to guide the theater through a multi-million dollar building renovation and rebranding effort. Hana became the first Black woman to lead a major regional theater in 2018 when she was named the Augustin Family Artistic Director of The Repertory Theatre of St. Louis. During her tenure at The Rep, Hana guided the organization through a strategic alignment, revolutionized the New Works program, expanding access to underserved communities, and centering equity and anti-racism as the organization's foundational values. Hana holds a BA from Spelman College and an MFA from the University of Houston. Hana is the recipient of USITT's 2023 Distinguished Achievement Award, Spelman's 2022 National Community Service Award, the 2009-10 Aetna New Voices Fellowship, EMC Arts Working Open Fellowship, and Theatre Communications Group (TCG) New Generations Fellowship. Hana is a founding member of The Black Theatre Commons (BTC). She serves on the board of directors for the TCG, BTC, and the Sprott Family Foundation.

EDGAR DOBIE (*Executive Producer*) Born in Vernon, British Columbia, a village next to the Rocky Mountains (three years after Arena had its first performance in 1950), I am one of five brothers raised by my Dad Edgar, a mechanic and small businessman, and Mom Connie, a telephone operator and union organizer. I am the only Dobie to make a career in theater. Luckily for me, drama was an arts elective I was offered at the tender age of 12 so I hung up my hockey skates and joined the drama class, led by teacher Paddy Malcolm and her fledgling Powerhouse Community Theater after school. By the time I graduated from high school, we volunteers had built ourselves a 200-seat, fully equipped theater on its own piece of land in the center of town and found a sold-out audience for the full season of plays we had on offer. That experience taught me so many lessons about the power of theater to foster collaboration and share meaningful stories, as well as the public values that attach themselves to building a safe place where everyone is welcome. All those lessons served me well as a managing leader and producer both sides of the border and both sides of the commercial and non-profit theater divide. Arriving here in Southwest with my good wife Tracy and our daughter Greta Lee in 2009 makes me feel like I am well-equipped to do a good job for you all. I am honored to have been recognized for my service to, and leadership of, the Washington, D.C.-area theater community as a recipient of Theatre Washington's inaugural Victor Shargai Leadership Award in 2022.



A Modern

American Cuisine Restaurant

within walking distance of Arena Stage

\$39 THREE-COURSE DINNER



Start your evening with a delicious three-course prix fixe menu then walk over to see the show.



Save 50% on Bottles of Wine, to pair with your dinner!

Get a 10% Discount on Dinner ordered off the regular A la Carte Menu when you present your Arena Stage Ticket

Offer not valid with Prix Fixe Menu, Wine Special, or any other offers or promotions.

NEW: Heated Outdoor Seating Now Available!

FOR MORE DETAILS, PLEASE VISIT:
WWW.STATION4DC.COM
PHONE: (202) 488-0987

1101 4TH ST, SW WASHINGTON, DC 20024

BOARD OF TRUSTEES / YOUNG PATRONS BOARD

ARENA STAGE BOARD OF TRUSTEES 2023/24

CHAIR

Catherine Guttman-McCabe

VICE CHAIRS

S. Decker Anstrom
Judith N. Batty
Michele G. Berman
Jeffrey M. Busch
Edgar Dobie
Kristen Donoghue
Rick Froehlich
Nicholas Goad
Sue Henry
Alethia Jackson
Richard A. Newman
David E. Shiffrin
Michele P. Toth
Shawna Watley

TRUSTEES

Jan Adams
Andrew R. Ammerman
Linda A. Baumann
Deborah Bowles
Susan Carter
Celandra Deane-Bess
Joseph P. DiGangi
Jeri Epstein
Richard Feinstein
David Fisher
Stephenie Foster
Dr. Donald Wallace Jones
Ricki Kanter
Elissa Leonard
John Lynham
B. Thomas Mansbach
David B.H. Martin
Jill McGovern
Robert Pincus
Ilene Rosenthal
Tiffany Sanchez
Hana S. Sharif
Mignon Smith
Sheila Stampfli
Michael S. Steele

HONORARY TRUSTEES

Jim Abdo
Ashok Bajaj
Joanne Barker
Sander Bieber
Steven R. Bralove
Susan Haas Bralove
Eric Braverman
John Edelmann
Elliot Feldman
Nancy M. Folger
Natwar Gandhi
Patti Herman
Vicki J. Hicks
Daniel Korengold
Judy Lansing Kovler
Mark Levine
Ronald A. Paul M.D.
Terry R. Peel
Beverly Perry
Lucia Riddle
Gene Samburg
Raymond Sczudlo
David Bruce Smith
Richard W. Snowdon
Margaret Tomlinson

LIFE TRUSTEES

Lee G. Rubenstein
Beth Newburger Schwartz

YOUNG PATRONS BOARD TRUSTEE

Whitney Hubbard

EMERITUS TRUSTEES

John M. Derrick
Arlene and Robert Kogod
David O. Maxwell
Joan P. Maxwell
Judy Lynn Prince,
in memoriam

CORPORATE OFFICERS

PRESIDENT
Edgar Dobie

TREASURER
Joe Berardelli

SECRETARY
Alison Irvin

YOUNG PATRONS BOARD 2023/24

The Arena Stage Young Patrons Board seeks to strengthen and support the future of American theater at Arena Stage. The Young Patrons Board supports the artistic mission of Arena Stage by being active ambassadors to the community and arranging opportunities for people under 40 years old to engage with the theater.

MEMBERS

Victoria Clark
Alexandria Edwards
Shoshana Golden
Whitney Hubbard
Ashley Lawrence
Lauren Pate
Emily Rouse
Hillary Stemple
Dr. Adrienne Thompson

THE MOLLY SMITH FUND FOR NEW WORK

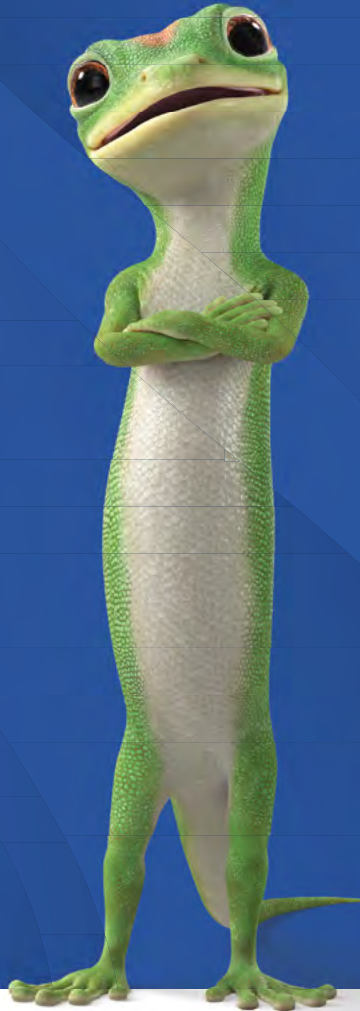
The Molly Smith Fund for New Work was created to honor the tremendous legacy of Molly Smith, Arena Stage's Artistic Director Emeritus, who retired at the end of the 2022/23 Season after 25 years of visionary leadership. The fund will support the artistic development of new work at Arena Stage, a pillar of Molly's vision.

Thank you to the following donors who supported this initiative through their philanthropic leadership.

Jan Adams	Sue Henry and Carter Phillips
Altria	JMA Solutions
Amaris	Arlene and Robert Kogod
Decker Anstrom and Sherry Hiemstra	Danny Korengold and Martha Dippell
Joanne Barker and The Jake Foundation	Melanie Franco Nussdorf
Michele and Allan Berman	Marsha and Alan* Paller
Diane and Norman Bernstein Foundation	Craig Pascal
Susan and Steven Bralove	Ourisman Automotive of Virginia
Elliot J. Feldman and Lily Gardner Feldman	Tiffany Sanchez and Reg Brown
G. David Fensterheim and The Joseph E. Robert Jr. Charitable Trust	Beth Newburger Schwartz
Patricia and David Fisher	Peggy and David Shiffrin
Rick and Carol Froehlich	Dr. and Mrs. Mark Shugoll
Michael Glosserman	Katie and Dick Snowdon
Hamilton and Marchand families in honor of Ann Hamilton	John and Cindy Weber
	George and Patti White
	Sandy and Jon Willen

GEICO Philanthropic Foundation

We know the only way to build stronger communities for tomorrow is to invest our time and energy today. We call it our insurance plan for the future and it's a policy we're proud of.



GEICO | PHILANTHROPIC FOUNDATION

THANK YOU

FULL CIRCLE SOCIETY— ARENA STAGE'S PLANNED GIVING PROGRAM

Arena Stage gratefully acknowledges these individuals who ensure the future of Arena Stage by making a planned gift. These gifts assure that Arena Stage will continue to challenge, educate and entertain audiences, and maintain its excellence in theater nationally, and internationally for generations to come.

Arena can help you accomplish your personal, family and philanthropic goals while benefiting the theater. Supporters who make planned gifts to Arena are invited to join the Full Circle Society and enjoy special benefits.

For more information about planned giving, please contact Maya Weil at 202-600-4158.

The following are members as of October 27, 2023.

MEMBERS

Anonymous (13)
Esthy* and Jim Adler
Dr. Bill Santford Ashley
Elinor R. Bacon
Linda A. Baumann
Nan Beckley
Sue Benson
Diane Boehr
Steven Bralove
Dr. Robert and Mary Jo Brenner
Bonnie and Jere Broh-Kahn
Louise Budelis
Donald Burch, III
James C. Burks and
Dr. Bette Jane Pappas
John P. Cahill
Ellen MacNeille Charles
Donald J. and Anita P. Cowan
Captain Joan Darrah and
Ms. Lynne Kennedy
Martin Alan "Marty" and
Belle Negrin Davis
Joseph P. DiGangi
John Edelmann and Jeffrey Love
Vivian B.* and Lisa D. Eggers
Barbara B. Ehrlich
Jeri and Gary Epstein
Skip and Laurette Farmer
Nancy M. Folger
Catherine F. and James F.* Fort, Sr.
Larry Franks and Ellen Berelson
Becky Fredriksson
Dr. Helene C. Freeman
Arlene Friedlander
Rick and Carol Froehlich
Steven Garron
Jon K. Gossett and Alex Urdaneta
Bob Gronenberg
Catherine and Christopher
Guttman-McCabe
Chris Harris
Betty Hawthorne
Dr. JC Hayward
Vicki J. Hicks
Richard and Pamela Hinds
Sallie L. Holder
Lauren and Glen Howard
Ann Ingram
David Insinga and Robert McDonald
Thomas Jesulaitis
James Johnson and
Matthew Shepard

Drs. Susan and Perry Klein
Dr. Seth A. Koch and
Barbara Bellman Koch
Patricia and John Koskinen
Justin Latus
Thelma K. Leenhouts
Herb and Dianne Lerner
Carol Ann and Kenneth Linder
John and Patricia Long
John and Lenora Lynham
Sandra L. Mabry
Alison Masters MacTavish
Wells R. McCurdy
Alfred Munzer and Joel Wind
Jeannette Murphy
Paul and Nancy Newman
Marina and David Ottaway
Laura Peebles
Amy Phillips
Robert Pincus
Michael and Penelope Pollard
Paul Rose
Richard Schwartz* and
Beth Newburger Schwartz
Larry Shaw and Richard Freitag
David E. Shiffrin
Mark and Merrill Shugoll
Mike and Patti Sipple
Leonard Sirota, Eileen Ivey and
Rachel Sirota
Molly Smith and
Suzanne Blue Star Boy
Dick and Katie Snowdon
Sheila A. Stampfli
Aileen and Jack Sullivan
Terri L. Tedford
Helene Toiv
Margaret L. Tomlinson
Maya Weil
Val and John Wheeler

BEQUESTS AND GIFTS IN REMEMBRANCE

Estate of Dr. and Mrs.
Clement C. Alpert
Estate of H. Max and
Josephine F. Ammerman
Estate of Jan Ellen Balkin
Estate of Audrey J. Barnett
Estate of Harry J. Boissevain
Estate of Henrietta T. Braunstein
Estate of Dorothy A. Bunevich
Estate of Marylou Calene
Estate of Patricia Carroll
Estate of Albert Chaiken
Estate of Helen G. Coddling
Estate of Marcus Cohn
Estate of Israel and
Augusta Convisser
Estate of Camille Cook
Estate of Robert D. Davis Jr. and
Henry J. Schalizki
Estate of Mr. William E. Faragher
Estate of Zelda Fichandler
Estate of Donald H. Flanders
In Memory of Helen W. and
Felix E. Geiger
Estate of Ann Gibbons
Estate of Ezra Glaser
Estate of George Grizzard
Estate of Giselle Hill
Estate of Joan E. Kain
Estate of Margot Kelly
In Memory of Jean Russ Kern and
Jeannette G. Kern
Estate of Herbert A. Lindow
Estate of LaRue R. Lutkins
Estate of Marianne R. Phelps
Estate of Suzy Platt
Estate of Judy Lynn Prince
Estate of Ms. Jane Rissler
Estate of Toni A. Ritzenberg
Estate of Gruine Robinson
Estate of Hank Schlosberg
Estate of Eugene Schreiber
Estate of Helga Tarver
Barbara R. Walton Endowment Fund
for New Playwrights
Estate of Eric Weinmann
Estate of Frankie and
Jerry Williamson

Today is the day to
inspire, delight
and amaze.



We're proud to support Arena Stage and the joy you bring to our community every day.

pnc.com



©2022 The PNC Financial Services Group, Inc. All rights reserved. PNC Bank, National Association. Member FDIC
CON PDF 0618-0106

THANK YOU

OUR INDIVIDUAL DONORS

Arena Stage gratefully acknowledges the many individuals and families who support the theater's work by contributing to the Annual Fund. These gifts make it possible for the theater to continue presenting high-quality productions and innovative education programs that strengthen the community in which we live.

For more information on the benefits of becoming an Annual Fund contributor, please call the Development Department at 202-600-4177.

The following are members as of November 27, 2023.

OVATION CIRCLE

Anonymous (1)
Decker Anstrom and Sherry Hiemstra
Drs. Elliot J. Feldman and Lily Gardner Feldman
Margot Kelly*
Arlene and Robert Kogod
Judy Lynn Prince*
Toni A. Ritzenberg*
Tiffany Sanchez and Reg Brown
Beth Newburger Schwartz and Richard Schwartz*

FOUNDER'S CIRCLE

Andrew R. Ammerman
Lola C. Reinsch and the Reinsch Pierce Family Foundation
Mr. and Mrs. Richard W. Snowdon

BENEFACTOR'S CIRCLE

Anonymous (1)
Janice Adams
Joanne Barker and the JAKE Foundation
Linda A. Baumann
Michele and Allan Berman
Deborah Bowles
Susan and Steven Bralove
Jeff Busch
William Caldwell and Michele Toth
Susan Carter
Pam and Richard Feinstein
Bonnie Field
Mr. and Mrs. David Fisher
Virginia McGehee Friend
Rick and Carol Froehlich

Chris and Catherine Guttman-McCabe
Sue Henry and Carter Phillips
Dr. Donald Wallace Jones, Dr. Betty Jean Tolbert Jones and Tracey Tolbert Jones
Mr. and Mrs. Daniel Korengold
Herb and Dianne Lerner
The Revada Foundation of the Logan Family
B. Thomas Mansbach
David and Martha Martin
Mr. and Mrs. Robert P. Pincus
Joe Reef, Peter Nguyen and the Reef Team of TTR Sotheby's
Ilene and Steven Rosenthal
Gene Samburg
Sheila Stampfli

LEADERSHIP CIRCLE

Anonymous (1)
Judith N. Batty
Celandra Deane-Bess
Joseph P. DiGangi
Edgar and Tracy Dobie
Kristen Donoghue and Jon Hacker
Vivian B.* and Lisa D. Eggers
Jeri and Gary Epstein
Stephanie Foster
Larry Franks and Ellen Berelson
Henock Gebreamlak and Nicholas Goad
Patti and Mitchell Herman
Alethia Jackson
Ricki and Joel Kanter
Sheldon and Audrey* Katz
Judy and Peter Blum Kovler Foundation

John and Lenora Lynham
Dr. Jill E. McGovern
Richard and Janice Newman
Peggy and David Shiffrin
David Bruce Smith and the Grateful American Foundation
Mignon and Kebharu Smith
Hon. Michael Steele
Shawna Watley

PRESIDENT'S CIRCLE

Eric Braverman and Neil Brown
Ellen MacNeill Charles
John Edelmann and Jeff Love
Daniel Hamilton
Kimberly Hulsej in memory of Shirley Shorter
Shannon and Randall Kempner
Mark T. Lewellyn
Nancy and Dan Longo
The Robert and Natalie Mandel Family Foundation
Doris Matsui and Roger Sant
Craig Pascal and Victor Shargai*
Janis Reed and Jack Requa
R. Lucia Riddle
William and Linda Rule
Thalia Sinnamon in memory of Lyn Sinnamon
Peggy and Alec* Tomlinson
Jon and Sandra Willen
Bill and Terry Witowsky

PRODUCER'S CIRCLE

Anonymous (2)
Jim and Mai Abdo

Ronald D. Abramson
Keith and Celia Arnaud
Erin and Derek Arrison
Dr. Sharon A. Bennett
Constance Bohon MD
Deborah Bowles
Connie Carter and Gordon Dale
John Chester
Richard H. Cleva
The Manny and Ruthy Cohen Foundation
Bonnie C. Carroll and Roy Cooper
James and Dorothy Dake
John and Linda Derrick
Kathy and Jody Dreyfuss
Nancy M. Folger
Rachel Frankeny
Katherine Ann Gardner
Woolf Gross
Susan B. Haight
Ann O. Hamilton*
Meg and John Hauge
Donald E. Hesse and Jerrilyn Andrews
Liz Hilder and Randy Smith
Thomas Jesulaitis and Barrie Seidman
Dr. James and Deborah Karesh
Cal and Barbara* Klausner
Caroline S. Klemp
Mark Levine and Sara Imershein
Charles McBride and Margaret DeBell
Richard and Erin Mills
Alfred Munzer and Joel Wind
Toni and Ronald Paul

YOU MAY PLAN TO LIVE UNTIL YOU'RE 150—AND WE HOPE YOU DO—BUT YOU STILL NEED AN ESTATE PLAN!

Everyone needs an estate plan to ensure their assets benefit the people and causes they value the most. Please consider leaving a gift in your will or designating Arena as a beneficiary of your retirement plan or Donor Advised Fund to help future generations enjoy theater. If you have already included Arena, let us know so we can include you in the Full Circle Society.

For more information, contact Maya Weil, CAP®, Arena's Gift Planning Specialist at 202-600-4158 or mweil@arenastage.org

The cast of *The Pajama Game*. Photo by Margot Schulman.



Ann and Terry R. Peel
 Beverly Perry
 Franklin D. Raines and
 Denise Grant
 Margaret Ann Ross
 Jean Schiro-Zavela and
 Vance Zavela
 Dr. and Mrs. Gene Simaitis
 William Spears
 Judi and Richard Sugarman
 Allison Thomas
 Suzanne Thouvenelle and
 Dennis Deloria
 Virginia D. Weber
 Judy and Leo Zickler

DIRECTOR'S CIRCLE

Anonymous (2)
 Leon and Robyn Andris
 Dr. and Mrs. C. Wrangle Barth
 Nan Beckley
 Grace and Morton* Bender
 Sander M. Bieber and
 Linda E. Rosenzweig
 James and Priscilla Blum
 Joe and Sue Bredekamp
 Bonnie and Jere Broh-Kahn
 Arlene Brown and
 Eugene Bialek
 Candice C. Bryant
 Susan and Dixon Butler
 Blain and Peg Butner
 Morris Chalick
 Lynne H. Church
 Debbie and Adam Cohen
 Beth Cunningham and
 David Wolfe

Belle N. Davis in memory of
 Martin "Marty" Davis
 Peter and Alison Fenn
 Robert and Carole Fontenrose
 Lawrence and Joanice Friend
 Bill and Linda Garvelink
 Amnon and Sue Golan
 Michael Greenbaum and
 Sherry Liebes
 Laura Hart
 Mr. and Mrs. Peter D. Hart
 Shelly and Jack Hazel
 Paul R. Henderson
 Vicki J. Hicks
 Martin and Nene Hill
 Theo W. Hodge, Jr., MD and
 Frederick Eugene Taylor, Jr.

David Insinga and
 Robert McDonald
 Knight Kiplinger
 Lauren S. Kogod
 Leslie S. Kogod
 Jean and John Lange
 Thelma K. Leenhouts
 John and Trish Long
 Steve Mayer and
 Vera Oye* Yaa-Anna
 Robert and Joelen Merkel
 Meenakshi and
 Arvind Nandedkar
 Joe Oppenheimer and
 Edith Fraser
 Marina and David Ottawa
 James T. Parson, Jr.

Dave Pawlik and
 Susan Albertine
 Laura Peebles and
 Ellen Fingerman
 Margaret Pollack and
 Paula Reed Lynch
 Mr. Michael Pollard and
 Mrs. Penelope Pollard
 Gail Povar and Larry Bachorik
 Margaret Rice and Bill Sette
 Talmadge and Mary E. Roberts
 British Robinson
 Jill and Rick Robinson
 Raymond and
 Deborah Sams Sczudlo
 Len and Eileen Sirota
 Molly Smith and
 Suzanne Blue Star Boy
 Annelise and Robert H. Smith
 Dr. and Mrs. Harvey
 Sweetbaum
 Keith and Jeanie Thackrey
 Laura L. Tosi
 Mary Vavrina
 Patricia Page Williams
 Richard and Leslie
 Wojciechowicz
 Deborah and David Yaffe
 Jane Yanulis

PLAYWRIGHT'S CIRCLE

Anonymous (9)
 General Clara Adams-Ender
 Garland Allen
 Jenna and Bill Allen
 The Estate of Dr. and Mrs.
 Clement C. Alpert
 Dean Amel and Terry Savella
 Virginia Anthony
 Tom and Loretta Beaumont
 Barbara Benoit
 Dava Berkman
 Tom Blackburn
 David and Judy Bonior
 Cynthia Boyer
 Rita Braver Barnett
 Wes Callender and Mary Davis
 William and Kathleen Carey
 Dr. Myla Carpenter
 Nancy Chesser and J.M. Rowe
 Geri and David Cohen
 Karen and Joseph Coleman
 Dr. Rita R. Colwell
 Wilson Compton
 Annemargaret Connolly and
 Kenneth Frank
 Ray and Mary Converse
 Frederick Corte
 Mr. Michael Crosswell
 Valerie and John Cuddy
 Johanna S. Cummings in
 memory of Ian Cummings
 Mr. and Mrs. Philip Currie
 Lorraine Day
 Cynthia J. Decker
 The Charles Delmar Foundation
 Angela Dickey and
 Patricia Norland
 Patricia L. D'Orazio
 Cheryl Dragoo
 Dr. Alexandria Edwards

Barbara and David Ehrlich
 Geraldine Feaster and
 Calvin Bethea*
 Elizabeth Fey
 Trudy Fleisher
 Lorraine Fleming and
 Harry Parrish
 Mr. and Mrs. Michael Flyer
 Ellen Fox MD
 The Henry J. Fox Trust
 JoEllen and Martin Frost
 Mr. and Mrs.
 Davis R. Gamble Jr.
 Amy C. Gilbert
 Lenue and Barbara Gilchrist
 Gregg H. S. Golden
 Shoshana Golden
 John M. Goodman
 A. Steven and Janet Hall Graff
 Linda Griggs and Bill Swedish
 Bob Gronenberg
 Carol and Bill Gross
 Dr. Martha Gross and
 Mr. Robert Tracy
 Gail Gulliksen
 Frank Guzzetta and
 Paul Manville
 Ellie and John Hagner
 Honorable Robert and
 Susan Hale
 Richard E. Hardy
 Chris Harris
 Patricia Harvey
 Doris Hausser
 Shawn C. Helm and
 J. Thomas Marchitto
 Lydia Jean Herz and
 Daniel Felger
 Lucia and Fred Hill
 Richard and Pamela Hinds
 Judy Honig and Stephen Robb
 Lauren and Glen Howard
 Whitney Hubbard
 Dr. and Mrs. David Humm
 John Iwaniec and Tracy Gray
 Harolyn and William Jackson
 Jason Johnston
 Elizabeth Blair Jones
 Martha L. Kahn and
 Simeon M. Kriesberg
 John Keator and
 Virginia Sullivan
 Kyle Kerr and Stephen Bique
 Dr. Sandra D. Key
 Kenneth and Carol Doran Klein
 Tuke and Pierce Klemmt
 Patricia and John Koskinen
 Teresa and Richard Kramer
 Barry Kropf
 Ms. Jane Mary Kwass
 Mr. and Mrs. William LaChance
 Jane Lang
 Richard and Cecilia Larkin
 John and Jane Lewis
 Dr. and Mrs. Randall J. Lewis
 Robert Liberator and
 Debra Kraft
 Carol Ann and Kenneth Linder
 Albert L. and Doris M. Lindquist
 Kenneth C. and
 Elizabeth M. Lundeen

Abby Mandel
 Susan and Dan Mareck
 Vicky Marchand
 Ms. Linda Marks and
 Mr. Rafael V. Lopez
 Joanne S. Martin
 Lorraine and Craig Martin
 Mary Martin
 Marlene Mayo
 Mark and Marsha Mazz
 Susan Hall McCannell
 Valerie McCauley
 Alan and Ruth Melvin
 Leigh Method
 Dr. Florence K. Millar
 Nancy Miron
 David Montgomery
 Martha Newman
 Fran O'Brien and Stephen Flott
 Ray Olson
 Mr. and Mrs. P. David Pappert
 Lauren Pate
 George and Andrea Pauli
 Scott Pearson
 Howard and Dorothy Pedolsky
 Judy Perry, Col (USAF Retired)
 Randolph Perry
 Paula and William Phillips
 Dr. and Mrs. Nathaniel Pitts
 Lutz Prager and Patricia Lark*
 Dr. and Mrs. Michael B. Price
 Whayne and Ursula Quin
 Nancy Regan
 Deborah Remmers
 Massimo and Marilou Righini
 Barbara Riley
 Bill and Donna Roberts
 Michael P. Rogan and
 Susan Schaffer
 Gareth Rosenau
 Bruce and
 Lori Laitman Rosenblum
 Helen Ross
 Cathy Rutherford and
 Lisa Levine
 Fern Flanagan Saddler
 Jo Ella Samp
 Jeff and Ellen Sandel
 Gregory Schultz
 Linda and Arthur Schwartz
 Carol Schwartz
 McAdo Shuler, Jr.
 Richard and Jacqueline Sellers
 Lisa and Jim Shannon
 Mark and Merrill Shugoll
 Bobbi and Larry Shulman
 Toby A. Silverman
 Mike and Patti Sipple
 Laura Smaligan and
 Eric Sandberg-Zakian
 Carl Wayne Smith and
 Michael Burke
 Lawrence and Arlene Spinelli
 S. Kann Sons Co. Foundation
 Cecile Srodes
 Dr. Earl P. Steinberg and
 Claire D. Reade
 Patricia Stonesifer and
 Michael Kinsley
 Aileen and Jack Sullivan

Robert J. Surovell
 Eileen and Michael Tanner
 Dr. Adrienne Thompson Brown
 Linda and Stuart Thomsen
 Barbara Toohill
 Judge and Mrs.
 James T. Turner
 Anne Paine and Fowler West
 Glenn Westley and
 Jeanne Holzgreffe
 John and Val Wheeler
 Jack and Sue Whitelaw
 Cynthia Williams
 Ken and Dorothy Woodcock
 Richie and Jim Wright
 Robert and Anne Yerman
 Margot Lurie Zimmerman in
 memory of Paul Zimmerman
 Jeffrey and Johanna Zinn

LEAD

Anonymous (8)
 Dr. and Mrs. Nelson Adamson
 Friend of Arena
 Dr. Bill Santford Ashley
 Lawrence Ausubel
 Dr. John Bailey and
 Mrs. Juanita O. Coye Bailey
 Michael Baker
 Dr. and Mrs. Ballard
 Mary Barton and
 Beth Biegelsen
 Anna K. Behrensmeier
 Sue Benson
 Carl and Courtney Bergeron
 Robert C. and Elissa B. Bernius
 Marc Blakeman
 Gretta Blatner
 Dr. and Mrs. Gerald Borsluk
 Randall A. Bowman
 Lynette Bouchie
 Jan Boyce
 Anne Boyden
 Ms. Carolyn Broussard
 Richard Allen Brown
 Harold R. Bucholtz
 Patricia and Mike Burke
 Leslie Calman and
 Jane Gruenebaum
 Ms. Patricia Carter
 Ruth Hughes Carver
 Henry Chamberlain and
 Lisa Burns
 Gail Chambers and Scott Baker
 Jo Ann Chin
 Ken and Lynne Cline
 Francis and Terry Coates
 Pamela Colbert
 Drs. Joanne and Frank Crantz
 Deanna K. Dawson
 Nancy Dawson
 Don Douglas and
 "Carolynne Weil"
 John Driscoll
 Sue Duncan and Leo Fisher
 Mrs. Elizabeth Edgeworth
 Janet Eining
 Dr. James Ellzy and
 Mr. Francis O'Malley
 David and Ana Evans
 Isaac Evans

Gary Felsler
 Edmund Fleet
 Pamela Friedman and
 Ronald Bayless
 Richard Gervase and
 Stuart Delery
 Kari Gissel
 Mark* and Sara Goldberg
 Paula S. Goldman
 Karen T. Grisez
 Tim and Norene Guilford
 Jack E. Hairston Jr.
 Robert and Carol Hall
 Mr. Lars Hanson and
 Ms. Rosanne LeVitre
 Ms. Margaret Hennessey
 Jessica Hirschorn and
 Henry Howard, Jr.
 Clarence G. Hoop
 Paul and Bonnie Hopler
 Drew Huffman
 Patricia Jackman and
 Stephen L. John
 L. Kempner
 Michael Kielbiewicz and
 Barbara Strong
 Elaine R. Leavenworth
 Drew Leiby and
 Wendy Schwartz
 Elizabeth C. Lee
 Stuart and Brock Lending
 Mrs. E. Kathleen Linville
 Milagros Mateu
 Lou Mazeway
 Sarah McMeans
 MaryAnn Miller
 Robin Mockenhaupt and
 Ralph Popp
 Steve Moore
 Bob and Wendy Morris
 Carol Mucha
 Donald and Lynne Myers
 Jeffrey Neal and Kevin Loeffler
 William and Louisa Newlin
 John and Gail Nields
 John and Carol Noble
 Doris Parker and Michael Spatz
 Jane Passman and Jack Moyer
 Stan Peabody
 Anne E. Peret
 Randy and Kathy Pherson
 Sophia Phillips
 Aaron Piña and James Frank
 Toby Port and Jeffrey Ahl
 Carroll Quinn
 Mr. and Mrs.
 Thomas J. Reckford
 Clyde Reilick and Julie Davis
 Christopher Robinson
 Dr. Tommie L. Robinson, Jr.
 Charles Rohe
 Herbert and Nancy Rosenthal
 Dr. Bernard and Louise Rostker
 Trina and Lee Rubenstein
 Blair and Sally Ruble
 Alan and Florence Salisbury
 Jean Sammon
 Richard and Jacqueline Sellers
 Dan Snyder and Rory Austin
 Emil and Judy Sunley

Dr. Sheila Taube
 Elizabeth and Jerome Teles
 Ryan Neels Terry and Louis Loh
 Mr. Al Thompson and
 Ms. Carol Michaelson
 Douglas Trainum in memory of
 Margaret Laves Trainum
 Dr. Carolyn Peoples Veiga
 Steve Verna
 Ms. Maria Wagner
 Roger and Diane Warin
 Cameron and
 Susan Weiffenbach
 Deborah V. Weinstein
 Robert Wilson

SUPPORTING ROLE

Anonymous (20)
 Nora Abramson and
 Dave Nathan
 Susan Absher
 Gloria D. Allen
 Hon. Frank and
 Mrs. Antoinette Almaguer
 David E. Andelman
 Tonia and Scott Anderson
 Victoria Arana
 Betty Ar buckle and
 Chuck Taylor
 Ramona Arnett
 Janet and David Batlan
 Ted Bean and Kathy Brown
 John and Sylvia Benoit
 Mr. Edward Blanton and
 Mr. Rusty Lynn
 Barbara B. Bloch
 Richard and Eleanor Bochner
 Alex Bogdanovsky and
 Elena Shtern
 Amy Bogdon and
 Robert Kornfeld
 Karen J. Bopp
 Valerie Briggs and Peter Kelley
 Hazel Broadnax
 Diane Brown
 Terrence J. Brown and
 Linda D. Whitlock-Brown
 S. M. Bumbrey
 Cynthia Bunton
 David M. and Susan F. Burke
 Patricia A. Burke
 Avery Burns
 Donna Butts and William Libro
 Sandra and Paul Byrne
 John Cahill
 Carol Caparosa
 Larry and Caroline Carbaugh
 Maria Carmona
 Carla Cartwright
 Mr. and Mrs. James P. Carty
 Cecilia M. Chandler
 Allayne and Brian Chappelle
 Richard G. and Niki K. Chavez
 Mary Martha Churchman
 Jeffrey Clark
 William and Louise Cleveland
 Rese Cloyd
 Nancie S. Coan*
 Jane Cohen
 Michael P. Cohen
 Ann C. Cole

Brian Collins
 John and Sheila Compton
 James and Ann Connell
 Dawn Cooke
 Paul and Barbara Couture
 Donald J. and Anita P. Cowan
 Susan M. Crawford
 Laura and Mike Cutler
 L. H. Daniel, MD
 Christian Daubert and
 Melvin Murphy
 Gail Davenport
 Stephen A. Dean
 Yumiko DeCarli
 Kendrea Delauter
 Lisa and Tony Delity
 Althea Dixon
 Kimberly Dixon
 Water B. Doggett III and
 Joanne Doggett
 Edward Donahue, III
 David Dunn
 Josef and Vera C. Dvorak
 Jerome Edwards
 Ann Elliott
 Evelyn and Barry Epstein
 Ralph and Gwendolyn Everett
 Catherine Fadel
 Bonnie and Larry Fields
 Jill A. Fields
 Ben Finzel and Mark Pimble
 Angelo Fiorenza
 Cathy and Donald Fogel
 Heather Foley
 Mr. Gary Fontaine
 David Frantz
 Douglas Freeman
 Jay W. Freedman
 Allan D. Friedman
 Bob Fugate
 Paul Gamble
 Wynn Gambrell
 Natwar Gandhi
 Alan and Caroline Gelb
 Mr. and Mrs. James Gentle
 Dr. Kirk Geter
 Jane Glickman and
 Charles Sacks
 Delbert Glover and Linda Grenz
 Maggie Godbold and
 Steve Bershader
 James and JoAnn Goedert
 Martha Goldstone
 Geraldine and Alan Graham
 Brad Gray and Helen Darling
 Bob and Marjorie Green
 Madi Green, in memory
 of Duff Green III
 Maxine Green
 Cindy and Phil Grisdela
 Sue and Bruce* Guenther
 Wilbur Hadden
 Dr. Marlene Haffner
 Daniel and Therisia Hall
 Bonnie and
 Alan Hammerschlag
 Betsy A. Harris
 Elizabeth and Jeffrey Harris
 Brenda Hawkins

SEE YOU IN THE LOBBY!



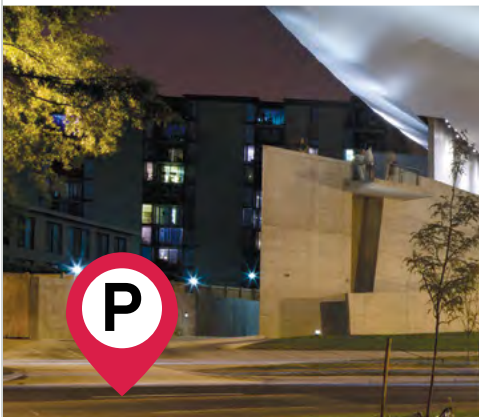
SPECIALTY COCKTAILS
Try one of our Arena-themed cocktails or family-friendly drinks.

SOUVENIR CUPS AVAILABLE

You may take drinks in a souvenir cup into the theater.



RESERVE PARKING – AND SAVE!



ENJOY ON-SITE PARKING

Go from your car seat to your theater seat with ease by reserving parking in our on-site garage. Book now to secure your spot!



ARENASTAGE.ORG/PARKING



THANK YOU

- | | | | |
|--|--|--|--|
| Kevin Hawkins and Dr. Terri Dickerson | Neil Lehrer and Joanne Tornow | Michael Perel and Jeanne Kadet | Juergen Tooren |
| Laurie Hayden | Paul Levine | Jeanne Kadet | Darrell Totman |
| Rachel Hecht | Dave Levy | Jeanne and Burnie Peters | Roger and Elizabeth Trangsrud |
| Cynthia Heckmann | Carroll and Sherry Little | Margaret and Carl Pfeiffer | John Tyler |
| James Heegeman | Jan and Elizabeth Lodal | Ane Powers | Ms. Jennifer A. Vasiloff |
| Bert Helfinstein and Margaret Rodenberg | Shirley Loo | Vijay Ramachandran and Emily Johnson | Lyman G. Van Nostrand |
| Connie Heller | Nga Lopez | Linda Ravdin and Don Shaper | Geoffrey and Susan Vincent |
| Paul Herman and Karen Goldman | Lucinda Low and Daniel Magraw | Emil and Judith Regelman | Marnie Walfoort and Cliff Elgarten |
| Jill Herscot | Joan Lunney | Catherine Remijan | Julie A. Walker |
| Mr. Jonathan A. Herz | Noreen Lyne | Maria Farese Rendine | Pamela Walker |
| Harold L. Hickson | Chris and Christine Magee | Lynn and David Rickard | Lillian Watkins |
| Jill Hill and Julie Hill | Terry Mahn and Gayle Novig | Paulette Ricks | Rosemary D. Weller* |
| Dorothea Hiltenbrand | Gerald and Madeline Malovany | Lynda Robb | Linda and Steve Weltz |
| Jean and Jim Hochron | Martin Malsch and Jane Axelrad | C.K. Robertson | Drs. Ann and Stephan* Werner |
| Bill and Marie Hoffman | Captain Lory Manning USN (RET) | June and Marvin Rogul | Bobbie Werner and Robert Katz |
| Toby Horn | Hon. John E. Mansfield | Marcia Rohrer | George and Patti White |
| Roger and Neesa Hoskin | Margaret Marin | Denise A. Rollins | Helen White and Andy Leighton |
| John and Debra Howard | Carol Marsh | Paul Rose | Greg and Mary Whiteman |
| The Katherine Lindsay Howell Fund | Michelle Mason | Gene and Shirley Rosenfeld | Dr. and Mrs. Robert Whitten |
| Jerry Hungerman | Lou Mayo | Sheryl Rosenthal and Marty Bell | Susan Wiener |
| Heather Huyck | Barbara E. Mays | Maryann Rozzell | Bernetta and Kevin Williams |
| David and Kaori Inoue | William McBride and Susan Caporaso McBride | Arthur Rubin and Elizabeth York | Jean and Sam Williams |
| Corrine and Bill Irwin | Elizabeth Ann McGrath | Nuhad D. Ruggiero | Larry and Patti Williams/Pride |
| Smyrna N. Jackson | Margaret McKelvey and William Harkins | Jane and Bruce Ryan | J. David Willson |
| Paul Jaikaran | Patricia McMahon | Barbara Sable | Beverly and Chris With |
| Joseph and Anne Jarboe | Cheryl McQueen | Mr. and Mrs. John Sacchetti | Conrad Wood |
| Diane Johnson-Quinn and Vincent Quinn | Terry and Tom Melo | Evelyn Sandground and Bill Perkins, in memory of Frank and Marta Jager | Beth and John Wright |
| Norm and Anita Johnson | Stephen Meyer and Erica Summers | Linda B. Schakel | David Young |
| Kenneth and Therese Johnston | Ivan Meyers | Pauline A. Schneider | Victor Zitel |
| Kimberly and Tad Johnston | William Michie | Stanley Schurgin | |
| Brendolyn McCarty-Jones and Leighton Jones | Eleanor Miller and Chris Finch | Dr. Frederick and Peri Schuyler | Legend: |
| Edward P. Jones | Sandy Mitchell | Diane E. Seeger | Ovation Circle |
| Mrs. Susan E. Jones | Charles and Patricia Moler | Sandra and David Sellers | \$100,000 and above |
| Thelma D. Jones | Mary Beth Moore and Douglas Ruby | Benjamin Sessions | Founder's Circle |
| Joyce E. Jordan | Judie and Fred Mopsik | Erin Shannon | \$50,000 – 99,999 |
| Olivia and Brian Kane | Carl and Delila Moravitz | Ambassador | Benefactor's Circle |
| Herschel Kanter | Stephen H. Morris and Jill L. Clark | Mattie R. Sharpless | \$25,000 – 49,999 |
| Dr. and Mrs. Ronald Karpick | Stephen Morris and Barry Abel | Kathleen Sheehan | Leadership Circle |
| Joseph and Jane Keady | Kent and Dale Morrison | Sylvia Shenk | \$15,000 – 24,999 |
| Joan Kelsch | Helaine G. Morss | Stephanie Shipp | President's Circle |
| Sylvia S. Kihara | Delphine Motley | Patrick Simien and Vicki Moore | \$10,000 – 14,999 |
| Peter Kimmel and Stephanie Jackson | Marilyn L. Muench | Valerie Singer | Producer's Circle |
| Carol A. King | Hedy Nash and John Wetterau | James A. Smailes | \$6,000 – 9,999 |
| Ms. Janet E. King | Susan Merritt Nelsen | Pamela Brown Smith | Director's Circle |
| Mrs. William Kingsbury | Nick Newlin | Kate Snyder | \$3,000 – 5,999 |
| Laura Kirkconnell | Jeremy I. Novak | Lynne and Jim Sprung | Playwright's Circle |
| Marie-Therese Klay | John Nulmeyer and Donny Malles | Janet Stanley | \$1,500 – 2,999 |
| Sandra and David Kleinman | Michael and Laura Opincar | Shellie Steinberg | Lead: \$700 – 1,499 |
| Mary Lou and Jack Kramer | Col and Mrs. Tommy T. Osborne | Donald R. and Dorothy T. Stone | Supporting Role: \$350 – 699 |
| Paul Kung | Elsie R. Page | Thomas Strikwerda and Donna Stienstra | |
| Mr. and Mrs. James Landberg | Victoria Chu Pao | Susan and John Sturc | We endeavor to provide a complete listing of all donors in the above categories. However, if your name is not listed, please contact the Development Department at 202-600-4177. We are also grateful to the thousands of other contributors to Arena Stage. |
| Carrie and Howard Langsam | Bill and Jenny Pate | Barbara and David Swan | |
| MK Lanzillotta and Lee Becker | Ms. Barbara Patocka | Paula S. Thiede and C. Wakefield Martin | |
| Allan and Sondra Laufer | | Dennis and Rosalind Thomas | |
| Karen Lee and Jim Brown | | Deborah Thompson | |
| Robin Lee | | Patricia Thorne | |
| | | Elizabeth Thornhill | |
| | | Barry and Helene Toiv | |

Andrew R. Ammerman is the Directing Sponsor of the 2023/24 Season. His support allows Arena Stage to feature the work of the finest directors on our stages. The beautiful costumes you see in the 2023/24 Season are generously sponsored by **Lola C. Reinsch and the Reinsch Pierce Family Foundation.**



exelonSM

We Share Your Dream for the Future

Powering our communities is just the beginning. At Exelon, we consider it our responsibility to improve the quality of life for people in the communities where we live, work and serve. Participation in good corporate citizenship is an integral part of our culture, and we inspire our employees to help everyone succeed.



THANK YOU

OUR INSTITUTIONAL DONORS

The vital support Arena Stage receives from many institutions makes our work possible. We thank those institutions who have generously donated \$1,500 or more to our Annual Fund campaign this year. This list represents supporters as of September 28, 2023.

OVATION CIRCLE



Anonymous

FOUNDER'S CIRCLE



Share Fund

BENEFACTOR'S CIRCLE



deLaski Family Foundation
William S. Abell Foundation
William H. Donner Foundation

LEADERSHIP CIRCLE



Anonymous
The Theodore H. Barth Foundation, Inc.
Dallas Morse Coors Foundation for the Performing Arts

PRESIDENT'S CIRCLE

Alice Shaver Foundation
ArentFox Schiff
BakerHostetler LLP
Central Parking System
Clark-Winchcole Foundation
Comcast NBC Universal
The Davis/Dauray Family Fund
The Max and Victoria Dreyfus Foundation, Inc.
Hattie M. Strong Foundation
Mars Foundation
S&R Evermay
Southwest Business Improvement District
Venable Foundation

PRODUCER'S CIRCLE

The Bernstein Companies
Dimick Foundation
England Family Foundation
Freedom Forum
Friends of Southwest DC
Graham Holdings Company
Hoffman Madison Waterfront
JBG Smith Cares
The Morgan Fund at Seattle Foundation
The Nora Roberts Foundation
Samueli Foundation
The Reef Team of TTR Sotheby's

DIRECTOR'S CIRCLE

Enterprise Holdings Foundation
The Howard and Geraldine Polinger Foundation
Potomac Law Group, PLLC
Wawa Foundation

Legend:

Ovation Circle.....\$100,000 and above
Founder's Circle.....\$50,000-\$99,999
Benefactor's Circle.....\$25,000-\$49,999
Leadership Circle.....\$15,000-\$24,999
President's Circle.....\$10,000-\$14,999
Producer's Circle.....\$5,000-\$9,999
Director's Circle.....\$2,500-\$4,999
Playwright's Circle.....\$1,500-\$2,499

We endeavor to provide a complete listing of all donors in the above categories. However, if your name is not listed, please contact the Development Department at 202-600-4177. We are also grateful to the thousands of other contributors to Arena Stage, whose names space will not permit us to print.

THEATER STAFF

Artistic DirectorHana S. Sharif
 Executive ProducerEdgar Dobie
 Founding DirectorZelda Fichandler
 (1924-2016)

Founding Executive
 Director..... Thomas C. Fichandler
 (1915-1997)

Artistic Director
 Emeritus.....Molly Smith

ARTISTIC DEVELOPMENT

Associate Artistic DirectorTeresa Sapien
 Senior Artistic ProducerReggie D. White
 Literary Manager.....Otis C. Ramsey-Zöe
 Artistic Associate, CastingJoseph Pinzon
 Artistic Development
 CoordinatorMelissa Singson
 Dramaturg.....Jocelyn Clarke
 Artistic Development FellowVanessa Dalpiaz*
 Current Commissioned WritersThe Bengsons,
 Lee Cataluna, Kia Corthron,
 Lady Dane Figueroa Edidi,
 Emily Feldman, Idris Goodwin,
 Caleen Sinnette Jennings, Deepak Kumar,
 Octavio Solis, Vera Starbard, Cheryl West,
 Lauren Yee, Karen Zacarias, Zack Zadek

ADMINISTRATION

Chief Financial Officer/
 Corporate Treasurer.....Joe Berardelli
 Chief of Staff.....Alison Irvin
 Controller.....John Monnett
 Staff AccountantChris Murk
 Accounting Associate.....Mark Runion
 Auditors.....Bormel, Grice & Huyett, P.A.
 Human Resources Assistant.....Tyra Picazo
 HR Consultant.....JobMorph
 Legal Counsel.....ArentFox Schiff LLP;
 Kramer Levin Robbins Russell
 Capitol Projects ConsultantRenTec Consulting

BUILDING OPERATIONS

Interim Operations/
 Facilities Manager.....Keaun Windear
 Maintenance Assistant.....Tevin Smith

PorterLawrence Wise
 Stage Door Attendant.....Kay Rogers

COMMUNITY ENGAGEMENT

Director of Community
 EngagementSean-Maurice Lynch
 Director of EducationAshley Forman
 School Programs ManagerRebecca Campana
 Community Programs ManagerMauricio Pita
 Training Programs Manager.....Zoë Hall
 Community Engagement
 Programming Coordinator.....Kayla A. Warren
 School Programs
 Fellow.....Jazmyn Ja'Net Roberson*

DEVELOPMENT

Chief Development OfficerRyan E. Merkel
 Director of
 Institutional Relations.....Shayla Hines-Graham
 Director of Development Operations
 and Events.....Maria Corso
 Director of
 Strategic Philanthropy.....R. Wesley Meekins
 Foundation Relations Manager.....Abigail Cady
 Corporate Sponsorships
 Manager.....Charity Harris
 Membership ManagerLauren Lopaty
 Gift Planning SpecialistMaya Weil
 Development Operations and
 Events Specialist.....Casey Radner
 Strategic Philanthropy
 Assistant.....Kiana Livingston
 Membership AssistantOscar León
 Development FellowMina Sollars*

GENERAL MANAGEMENT

General ManagerAlicia Sells
 Assistant General
 Manager.....Katharine Templeton
 Company ManagerTrisha Hein
 General and Production
 Management CoordinatorJenna Murphy
 General and Company
 Management Fellow.....Alexandra Lopez*

AUDIENCE SERVICES, BUSINESS INTELLIGENCE & INFORMATION SYSTEMS, EARNED REVENUE, MARKETING & COMMUNICATIONS

Chief Marketing & Strategy Officer,
 Vice President.....Shonali Burke
 Administrative Coordinator &
 Executive Assistant.....Connor Muldowney

AUDIENCE SERVICES

Director, Audience ServicesAndrew Rampy
 Lead House ManagerDaniel Ricci
 House Managers.....Ric Birch, Bruce Perry
 Parking.....SP Plus

BUSINESS INTELLIGENCE & INFORMATION SYSTEMS

Director, Business Intelligence
 and Information Systems.....Rich Johnson
 System Administrator.....Brian Oh
 Business Intelligence and
 Tessitura Lead (consultancy)Sabrina Clark
 IS Help DeskEddie Wieland

EARNED REVENUE

Director, Earned Revenue.....Isaac Evans
 Earned Revenue Assistant.....Sabrina Zillinger
 Lead Manager, Sales.....Jessica Comstock
 Lead Group Sales Associate.....Donald Jolly
 Group Sales Associate.....Brandon Ferguson
 Managers, Sales.....Caroline Hunt,
 Marion Levy Qualls
 Sales Associates.....Keshawn Connor,
 Hannah Damanka, Kenyana Dean,
 Aaron Hutchens, Meg Karch,
 Kendra Luedke, Joy Mason

Manager,
 Events and Rentals.....Chrystal Vaughan
 Lead Events
 and Rentals AssociateTrevor Haren
 Events and Rentals Associate.....Aisha Noma
 Lead Manager,
 Retail Operations.....Jody Barasch
 Lead Bartender.....Erika Wallace
 Bartenders.....Edwin Cortez, Greg Gonzales,
 Kaitlyn Sakry, Brad Teague

MARKETING & COMMUNICATIONS

Director, Marketing
 & CommunicationsElizabeth Hawks
 Associate Director, Marketing
 and CommunicationsRyan Impagliazzo
 Manager, Digital and
 Social Media.....Juliana Avery
 Manager, Email and
 Digital Content.....Clare Lockhart
 Lead Associate,
 Public Relations.....Anastasia St. Hilaire
 Junior Multimedia DesignerKristopher Ingle
 Marketing and Media FellowDestiny King*
 Graphic Design Fellow.....Darlen Mitchell*

PRODUCTION

Director of Production.....Robert Hand
 Production ManagerTrevor A. Riley
 Assistant Production
 Manager.....Rachel Crawford

STAGE MANAGEMENT

Resident Production
 Stage Manager.....Christi B. Spann

SCENIC

Technical DirectorChris Stoutjesdyk
 Associate Technical DirectorClare Cawley
 Scene Shop SupervisorTravis Smith
 Charge Scenic Artist.....Li Qiang
 Carpenters.....Erick Boscana,
 Matthew Grisdela,
 Julia Junghans, Hannah Martin,
 Logan McDowell, Frank Miller,

PROPERTIES

Properties DirectorJennifer Sheetz
 Associate Properties Director.....Jonathan Borgia
 Head Props ArtisanNiell DuVal
 Props Artisan.....Kyle Handziak
 Props Assistants.... Erica Feidelseit, Alekx Shines

LIGHTS

Lighting SupervisorPaul Villalovoz
 Assistant Lighting Supervisor.....Olivia Rudd
 Electricians.....Scott Folsom, Kelsey Swanson
 Lighting Fellow.....Indigo Garcia*

SOUND

Sound and Video SupervisorBrian Burchett
 Master Sound and Video
 TechnicianTimothy M. Thompson
 Sound Technicians.....Lex Allenbaugh,
 Alex Cloud, Drew Moberley

COSTUMES

Costume DirectorJoseph P. Salasovich
 Associate Costume Director.....Cierra Coan
 Drapers.....Erika Krause, Carol Ramsdell
 First HandsMichele Macadaeag,
 Elizabeth "Liz" Spilsbury
 Craftsperson.....Deborah Nash
 Wardrobe SupervisorsAdelle Gresock,
 Alice Hawfield

Wigs, Hair, and
 Makeup Supervisor.....Jaime Bagley

*2023/24 Class of the Allen Lee Hughes
 BPOC Fellowship Program

COMING UP NEXT



MINDPLAY

CREATED AND PERFORMED BY **VINNY DePONTO**

WRITTEN BY **VINNY DePONTO** AND **JOSH KOENIGSBERG**

DIRECTED BY **ANDREW NEISLER**

PRODUCED BY **EVA PRICE**

JANUARY 19 – MARCH 3

Mindplay photo of Vinny DePonto by Jeff Lorch.

