

2024/25 SEASON

arena
stage

Agatha Christie

DEATH
on the **NILE**

ADAPTED FOR
THE STAGE BY **KEN LUDWIG**



DIRECTED BY HANA S. SHARIF

NOV 30 – DEC 29

PENDRY

WASHINGTON DC - THE WHARF



Contemporary Luxury

Polished comfort. Modern edge.
A new tradition of luxury hospitality.

PENDRY.COM | 202 843 1111

L.V.X.[™]
Preferred
HOTELS & RESORTS

TABLE OF CONTENTS

- 5 Artistically Speaking
- 7 From the Executive Producer
- 8 Dramaturgy Note
- 11 Title Page
- 13 Setting / Cast
- 15 For This Production / Special Thanks
- 17 Bios — Cast
- 21 Bios — Creative
- 25 Bios — Arena Stage Leadership
- 29 Board of Trustees / Young Patrons Board
- 31 Thank You — Full Circle Society
- 32 Thank You — Individual Donors
- 37 Thank You — Institutional Donors
- 38 Theater Staff

ARENA STAGE

1101 Sixth Street SW
Washington, DC 20024-2461
ADMINISTRATION 202-554-9066
SALES OFFICE 202-488-3300
arenastage.org

©2024 Arena Stage.
All editorial and advertising material
is fully protected and must not be
reproduced in any manner without
written permission.

Death on the Nile © 2024 Agatha Christie
Limited & Ken Ludwig. All rights reserved.
adapted from

Death on the Nile © 1937 Agatha Christie
Limited. All rights reserved.

DEATH ON THE NILE, AGATHA CHRISTIE,
POIROT and the Agatha Christie
Signature are registered trademarks of
Agatha Christie Limited in the UK and
elsewhere. All rights reserved.

Death on the Nile program book
published November 30, 2024.

Cover Illustration by Matt Saunders.

PROGRAM BOOK STAFF

Ashton Beck, Director of
Marketing & Communications
Ryan Impagliazzo, Associate Director of
Marketing & Communications
Kristopher Ingle, Graphic Designer



Armando Durán as Hercule Poirot for Agatha Christie's *Death on the Nile* adapted for the stage by Ken Ludwig. Photo by Tony Powell.

SHARE YOUR EXPERIENCE!



@arenastage

#ArenaStage
#ArenaStageDC
#ArenaNile



WIFI NETWORK:
ArenaGuest

PASSWORD:
arenaguest

ARENA STAGE'S MISSION

Arena Stage is the voice of American theater resident in our nation's capital. Focused on American artists, our productions are innovative and representative of stories from across the country. We nurture new plays and reimagine classics. We celebrate our democracy and diversity through a multitude of voices in our productions and community engagement programs to inspire people to action. We produce all that is passionate, exuberant, profound, entertaining, deep and dangerous in the American spirit.



OUR LAND ACKNOWLEDGEMENT

Arena Stage is built on the land of the Nacotchtank and Piscataway people of the Algonquin-speaking tribes, as well as the lands of the Native American people of the greater Anacostia, Potomac, and Tidewater regions.



ARTISTICALLY SPEAKING

“Ah, but life is like that!

It does not permit you to arrange and order it as you will.

It will not permit you to escape emotion, to live by the intellect and by reason!

You cannot say, ‘I will feel so much and no more.’

Life... whatever else it is, is not reasonable.”

—Hercule Poirot

It is a great gift to embark on my directorial debut at Arena Stage with an exhilarating journey into the enigmatic world of *Death on the Nile* and to revel in a world that is both fresh and familiar, iconic and modern, comforting in its ubiquity, and delicious in its complexity. Working with the incomparable Ken Ludwig on this world-premiere adaptation has been both a joy and a privilege. I have long been enchanted by Ken’s clever, insightful, comedic theatrical adventures, so it was delightful that he was one of the first artists to welcome me to Washington, DC, last fall.

Indeed, Agatha Christie once said, “I’ve often noticed that when coincidences start happening, they go on happening in the most extraordinary way.” It is a strange and wonderful symmetry to mirror the show that closed out my tenure at The Repertory Theater of St. Louis, Ken Ludwig’s adaptation of Agatha Christie’s *Murder on the Orient Express*. Agatha Christie’s intricately crafted mysteries have a keen ability to pull us out of our day-to-day and unlock a deep sense of wonder. It is a gift to share this story with a playwright whose enthusiasm for digging into the mysteries of our shared humanity matches my own.

In a world rife with uncertainty, I have been returning to a truth that has long provided solace: that storytelling and the fundamental human underpinnings of love and resilience that excellent storytelling reveals are the central backbone of our society. We turn to new plays and world classics to guide our way, trusting that the curiosity and reverence with which we approach these stories can be a comfort and a compass when the path—or the river—ahead feels dark.

Interrogating these mysteries has been the core of Arena Stage’s work for nearly 75 years. Our intrepid founder, Zelda Fichandler, once said, “New plays are central to our repertory since they come from the very time of our lives. But the world classics must remain alive in the present for our contribution to be complete. We are as we were and always will be, and deep truths about our misplaced love, our lust, our foolishness, cruelties, hunger for power, and dread of death are embedded in these great works, which turn their faces to us as the world turns.”

This production is a unique blend of a new work and a classic tale, a rare treat for theatergoers. Through the lens of Agatha Christie’s iconic detective, Hercule Poirot, we embark on a journey across continents and into a complex web of intersecting threads. Passion, hope, lust, betrayal, financial ruin, malfeasance, love, and rage compete for the stage, and Ken Ludwig’s indelible pen breathes life, humor, and a fresh perspective into this eclectic band of characters trapped in Anubis’s murderous lair, *The River Nile*.

At the core of this play is Agatha Christie’s powerful belief that under the right series of circumstances, ordinary people can be driven to extraordinary acts. In the wake of unspeakable violence, the S. S. Karnak’s once-merry band of travelers are left to grapple with the significant cost of emotional recklessness. Christie’s inimitable protagonist, Hercule Poirot, cautions his brethren, “Do not open your heart to evil. If you do, evil will make a home within you.” As we all move through this holiday season, this play is a powerful reminder that love and tenderness, despite their many guises, are our greatest force for good, and that at the end of the day, the needle of our moral compass points toward each other.

Hana S. Sharif
Artistic Director

Arena Stage
Washington, DC

CLARK
CONSTRUCTION

**Proudly Shaping
the Local Landscape**



FROM THE EXECUTIVE PRODUCER

Trivia question: How many full-length plays by Ken Ludwig has Arena Stage produced? Four: *Shakespeare in Hollywood* (2003), *Baskerville: A Sherlock Holmes Mystery* (2015), *Dear Jack, Dear Louise* (2019), and now Agatha Christie's *Death on the Nile*.

More trivia: Ken also wrote a 10-minute play as part of *Our War* (2014), a compilation of short pieces on the American Civil War. In addition, during the dark early days of the pandemic, he partnered with Arena to mimic the *Dear Jack, Dear Louise* experience with physical letters telling the story of the play mailed to patrons.

And a piece of personal trivia: Back in my commercial producing days, I worked as co-producer with the Nederlander Organization and Ken on the musical *The Adventures of Tom Sawyer* with a score by Don Schlitz.

What isn't trivial are the relationships artists build with other artists and organizations. Our community of artists stretches over many miles and years. When I use the word "artist" in this context, it includes the many artisans, craftspeople, administrators, teachers, producers, and of course, you, our audience, that make up our organizations—and therefore our communities. We meet these artists at different points in our lives, connecting and disconnecting, and reconnecting again. It is equally important to have long-standing and new voices in our communities. It's always fun when, as with *Death on the Nile*, it's a new piece from a familiar voice.

Ken is not the only returning community member this season. As I'm sure many of you know, Karen Zacarias is another big part of Arena's extended community. Her adaptation of Edith Wharton's *The Age of Innocence* comes to the Fichandler in February and March. The trivia buffs out there may be interested to know that Arena has previously produced four of Karen's plays: *Legacy of Light* (2009), *The Book Club Play* (2011), *Destiny of Desire* (2015), and *Native Gardens* (2017). Similar to Ken, she also had a piece in *Our War*, and she greatly contributed to Arena's artistic life during the dark days of the pandemic, through both of Arena's online films: *May 22, 2020* and *The 51st State*.

I've cited these two playwrights because they are in our current season, but by no means are they the only returning friends in our artistic community. Among the casts and design teams this season are many deep relationships. It makes me proud to know that Arena has played a role in creating a broad artistic community, including welcoming audiences like you—whether for the first time or the 75th.

Warmly,

Edgar Dobie
Executive Producer
President of the Corporation

HEAD AND HEART: MYSTERY AND FELICITY

BY OTIS RAMSEY-ZÖE, DRAMATURG



Edgar Allan Poe's "The Murders in the Rue Morgue," published in April 1841, is considered the first detective story. Poe is said to have drawn inspiration from the 1828 memoir by François-Eugène Vidocq, a Frenchman and founder of the world's first detective bureau in Paris. While Poe received credit for founding the detective mystery genre, Sir Arthur Conan Doyle (creator of the Sherlock Holmes series) and Dame Agatha Christie (best known for works featuring fictional detectives Hercule Poirot and Miss Marple) are recognized masters of the genre. Why should a genre created nearly 200 years ago endure with such immense popularity today? We live in such uncertain times. Perhaps we turn to detective tales for the certainty they provide.

Detective stories are popular perhaps because they offer reassurance. Cases

at the heart of the stories often concern murder, and unwaveringly these tales suggest a world in which someone cares about what happened to victims and where someone will pursue justice on behalf of the deceased, injured, or aggrieved. Crime represents a breach not just against its victims but against society at-large. For the maintenance of social understandings that enable us to continue living in relationship to one another, and especially amongst strangers, we must trust that the restoration of order will be a value practiced by those in power.

A tenet of mysteries is that everyone introduced in the narrative is a suspect. In the foreword to her Hercule Poirot mystery novel *Cards on the Table*, Christie asserts that, "any one of them, given the right circumstances, might have committed the crime." There



is always a logical solution to the problem. Detective mysteries express the triumph of the logical mind and posit that any allegedly unsolvable or perfect crime can be resolved through successful thinking. To unravel the mystery, both detective and audience must pay attention to details and context, as a perpetrator will always attempt to disguise what they have done. Where do the pieces not make sense? What doesn't fit the puzzle? As the tale unfolds, pieces that don't fit, or that seem insignificant, accumulate. Attention to deliberate misfits is key to breaking the code.

However, Ken Ludwig's adaptation of *Death on the Nile* is not interested in adhering exclusively to principles of mystery. Ludwig harvests Christie's novel for its astute investigator, rich characters with plenty of motive, and

the essential plot, and then he adds comedy to the mix. Classically, comedy tends to focus on relationships, often explicitly romantic pairings, and end in some form of union. Whereas the traditional mystery centers on the head, the comedy revolves around the heart. The stress and heaviness of death is counterbalanced by the levity and delight of potential love. Passion in Ludwig's work is often madcap, tender, and surprising. According to Ludwig, "I decided that the best way to write a mystery for the stage was to make the piece as relentlessly entertaining as I possibly could — another way of saying that the forward propulsion of the piece should never flag." This fusion produces an adaptation that crackles with the best of Christie and Ludwig and invites audiences into a world where quests for justice and love are weighed equally.



Armando Durán, Jamil A.C. Mangan, Travis Van Winkle, Olivia Cygan, and Katie Kleiger for Agatha Christie's *Death on the Nile* adapted for the stage by Ken Ludwig. Photo by Tony Powell.

ARENA STAGE
HANA S. SHARIF, ARTISTIC DIRECTOR | EDGAR DOBIE, EXECUTIVE PRODUCER

PRESENTS

Agatha Christie®

DEATH
on
the NILE

ADAPTED FOR
THE STAGE BY KEN LUDWIG
DIRECTED BY HANA S. SHARIF

SET DESIGNER
ALEXANDER DODGE

COSTUME DESIGNER
KAREN PERRY

LIGHTING DESIGNER
KENNETH POSNER

ORIGINAL MUSIC AND SOUND DESIGN
CHARLES COES AND NATHAN A. ROBERTS

PROJECTION DESIGNER
BRITTANY BLAND

HAIR AND WIG DESIGNER
LASHAWN MELTON

FIGHT DIRECTOR
SORDELET INC. —
RICK SORDELET

DIALECT AND VOCAL COACH
LISA NATHANS

DRAMATURG
OTIS RAMSEY-ZÖE

NEW YORK CASTING
CAPARELLIOTIS CASTING /
DAVID CAPARELLIOTIS
AND JOSEPH GERY

DC CASTING
RAYON HUNTER

CREATIVE ASSOCIATE
ASHLEY D. POLASEK

STAGE MANAGER
CHRISTI B. SPANN*

ASSISTANT STAGE MANAGER
DAYNE SUNDMAN*

Support for *Death on the Nile* is provided by
David and Patricia Fisher, Daniel Korengold, Martha Dippell, and OURISMAN
Michele and Allan Berman, and Catherine and Chris Guttman-McCabe.



MULTI-ARTS SUMMER DAY CAMP

WHERE COMMUNITY AND ART MAKE MAGIC

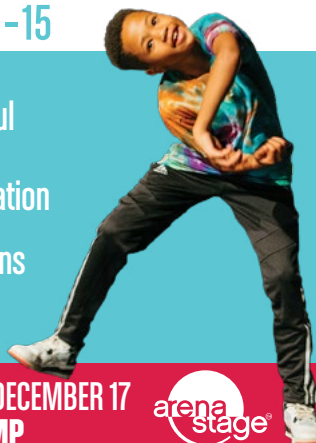
ART | DANCE | THEATER | MUSIC | WRITING | AND MORE!

FOR YOUNG PEOPLE AGES 8-15



On the Beautiful
Grounds of
Georgetown Visitation

Multiple Sessions
Available



SAVE THE DATE: REGISTRATION OPENS DECEMBER 17
LEARN MORE AT [ARENASTAGE.ORG/CAMP](https://arenastage.org/camp)



VOICES of NOW



MIDDLE THROUGH HIGH SCHOOL AGE

Build confidence.

Turn ideas into action.

Perform on a professional stage.

Join Voices of Now, an internationally-recognized program for young artists and changemakers. Learn how to express yourself through writing, movement, and collaboration. Work with your peers to write a play about what matters to you. Registration for 2025 now open!



LEARN MORE AT [ARENASTAGE.ORG/VOICESOFNOW](https://arenastage.org/voicesofnow)

SETTING

Summer 1937.

CAST

(in alphabetical order)

Annabelle Pennington.....	FELICIA CURRY*
Linnet Ridgeway.....	OLIVIA CYGAN*
Hercule Poirot.....	ARMANDO DURÁN*
Septimus Troy.....	ERIC HISSOM*
Jacqueline de Bellefort.....	KATIE KLEIGER*
Colonel Race.....	JAMIL A.C. MANGAN*
Ramses Praed.....	RYAN MICHAEL NEELY*
Salomé Otterbourne.....	NANCY ROBINETTE*
Atticus Praed.....	ROBERT STANTON*
Simon Doyle.....	TRAVIS VAN WINKLE*
Rosalie Otterbourne.....	SUMIÉ YOTSUKURA*

UNDERSTUDIES

For Ramses Praed, Simon Doyle – BRANDON HAAGENSON*

For Linnet Ridgeway, Jacqueline de Bellefort, Rosalie Otterbourne – LILLI HOKAMA*

For Hercule Poirot, Septimus Troy, Colonel Race, Atticus Praed – KEITH RICHARDS*

For Salomé Otterbourne, Annabelle Pennington – ERIKA ROSE*

EXTRAS

SAM FROMKIN, KIRA GANDOLFO, DANIEL MASEDA

**Members of Actors' Equity Association*



The
Kennedy
Center

BROADWAY CENTER STAGE
PRESENTS

**WORLD PREMIERE OF
A NEW MUSICAL!**

SCHMIGADOON!

BOOK, MUSIC, and LYRICS by **CINCO PAUL**

DIRECTION and CHOREOGRAPHY by **CHRISTOPHER CATTELLI**

BASED ON THE APPLE ORIGINAL SERIES SCHMIGADOON!

JANUARY 31–FEBRUARY 9, 2025

EISENHOWER THEATER



Kennedy-Center.org

The ONLY OFFICIAL WEBSITE of the Kennedy Center
(202) 467-4600

Groups 20+ (15 for *Shear Madness* and 10 for Washington National Opera) call (202) 416-8400

For all other ticket-related customer service inquiries, call the Advance Sales Box Office at (202) 416-8540.

**THANKS TO
OUR SPONSORS**

Theater Presenting
Sponsor



Altria

The **DRUTZ FAMILY**
Fund for Musical Theater

The Blanche and Irving Laurie
Foundation

FOR THIS PRODUCTION

Associate Projection Designer	ZAVIER TAYLOR
Assistant Director.....	JAIDA GILLESPIE
Assistant Set Designer.....	CLAYTON DOMBACH
Projections Programmers.....	TIFFANY CHEN, JERRAN KOWALSKI
Intimacy Consultant	SORDELET INC. AND VICTORIA VOURKOUTIOTIS
Movement Consultant	DEMOYA WATSON BROWN
Magic Consultant	RYAN PHILLIPS
Production Assistant.....	KYLA S. MERMEJO-VARGA
Stage Supervisor	HANNAH MARTIN
Deck Carpenter.....	COURTNEY NAUGHTON
Props Technicians.....	LUÍS RAMON CÓRDOVEZ, ERICA FEIDELSEIT
Light Board Operator.....	KELSEY SWANSON
Lighting Assistant.....	CHRISTIAN HENRRIQUEZ
Audio Engineer	LIV FARLEY
Second Audio.....	EMILY PAN
Wardrobe Supervisor	ALICE HAWFIELD
Wardrobe	LILLIAN HALL, CAITLIN O'BRIEN
Wigs, Hair and Makeup Supervisor.....	JAIME BAGLEY
Crew Swings.....	TREVOR COMEAU, MADALYN OLIVER

SPECIAL THANKS

Arena Stage would like to thank the following individuals and organizations for their support of this production:

- Great Lakes Scenic Studios and Tom Carroll Scenery
- Denny Blackwell

The videotaping or audio recording of this production is strictly prohibited. Please turn off all electronic devices. Drinks with a lid are allowed in the theater. Eating is not permitted inside the theater.

24/25 SEASON

PACKAGES NOW ON SALE

LEOPOLDSTADT

ALL THE DEVILS ARE HERE

HOW SHAKESPEARE INVENTED THE VILLAIN

KUNENE AND THE KING

UNCLE VANYA

FRANKENSTEIN

JUST ADDED

DUEL REALITY

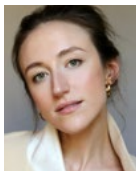
SUBSCRIBE TODAY ShakespeareTheatre.org | 202.547.1122

STC

CAST



FELICIA CURRY (*Annabelle Pennington*) last appeared at Arena Stage in *POTUS*. Most recently, she was in the one-woman thriller, *Sandra*, at TheaterWorks Hartford, and performed her solo cabaret at Everyman Theatre. Felicia received a Helen Hayes Award for *Lela & Co.* at Factory 449 where she is a company member. She is also a Resident Company Member at Everyman Theatre and an Artistic Associate at Ford's Theatre. Felicia made her Broadway debut in the Tony-nominated revival of *Into the Woods*, and then toured with the show around the country, including at The Kennedy Center. She has a Berkshire Theatre Critics Award, a RTCC Award, an Anderson-Hopkins Award, and is a two-time AUDELCO nominee for *Queens Girl in the World* at Abingdon Theatre and *Fabulation* at The Billie Holiday Theatre, both off-Broadway. Felicia has been named one of "12 DC Stage Dynamos" by *The Washington Post* and one of "DC's Biggest Theater Stars" by *Washingtonian* magazine. She is on the WAPAVA Board of Directors and the Emmy-nominated host of WETA Arts on PBS. Instagram: @thefeliciacurry



OLIVIA CYGAN (*Linnet Ridgeway*) is thrilled to be making her Arena Stage debut! Olivia is a New York-based actor and recent graduate of the Yale School of Drama. This spring, she understudied *Doubt* on Broadway (*Roundabout*), directed by Scott Ellis. A native of Chicago, Olivia has originated roles in world premieres at Steppenwolf and Goodman. She's developed new work at theaters across the country, most recently with New York Stage and Film and Playwrights Realm in NYC. Television: *Gotham*. BS: Northwestern University. Carol Finch Dye Award, Yale School of Drama.



ARMANDO DURÁN (*Hercule Poirot*) was a member of the repertory acting company at the Oregon Shakespeare Festival for over twenty years, where his roles included Antony in *Antony and Cleopatra*, Julius Caesar in *Julius Caesar*, Don Quixote in

Don Quixote, García Lorca in *Lorca in a Green Dress*, and Eddie Carbone in *A View from the Bridge*. He has originated characters in over a dozen world premieres including new works by Pulitzer Prize winners Nilo Cruz, Robert Schenkkan, and Frank Galati. He has appeared in productions at the Folger Theatre, Guthrie Theater, Repertory Theater of St. Louis, Yale Repertory, Seattle Repertory, the Clarence Brown Theatre, The Old Globe, and South Coast Repertory. His numerous audiobook titles include *Avenue of Mysteries* by John Irving and *Love in the Time of Cholera* by Gabriel García Marquez.



ERIC HISSOM (*Septimus Troy*) has appeared at Arena Stage in *Vanya and Sonia and Masha and Spike* and *JQA*. DC credits include *Our Town* and *Comedy of Errors* at Shakespeare Theatre; *Twelve Angry Men* and *Born Yesterday* at Ford's; *Cyrano and Arcadia* (Helen Hayes Award) at the Folger; *Body of an American* and *Life Sucks* at Theater J; *The Tempest* and *Bengal Tiger at the Baghdad Zoo* at Round House; *The Effect* at Studio; *The Vibrator Play* at Woolly Mammoth; and others. National Tour: *The 39 Steps*. He has worked at many regional theaters, including Seattle Rep, La Jolla Playhouse, Cleveland Play House, Milwaukee Rep, Asolo Rep, Arden Theatre, Orlando Shakespeare Theater, The Cape Playhouse, and others. Eric has an MFA from the FSU/Asolo Conservatory.



KATIE KLEIGER (*Jacqueline de Bellefort*) is excited to make her Arena Stage debut. Other DC credits include *White Noise*, *The Wolves*, *The Effect* (Studio Theatre); *Unseen* (Mosaic Theater); *Book of Will*, and *Miss Bennet* (Round House Theatre). Katie is also a company member at Everyman Theatre in Baltimore, where she most recently appeared as Dusty in *POTUS*. Her Off-Broadway credits include *Sleep No More* (McKittrick Hotel), *Ring Twice for Miranda* (New York City Center), and *The Fall* (SoHo Playhouse). Select regional credits include *Everything is Wonderful* (Philadelphia Theatre Company), *Pride and Prejudice* (Repertory Theatre of St. Louis), and *Juno and the Paycock* (Guthrie Theater). Katie is also a singer-songwriter; you can find her music on all streaming platforms. Training: Guthrie BFA Acting Program. Instagram: @katiekleiger

Ourisman Proudly Supports Arena Stage

CHANTILLY TOYOTA

(703) 378-2121

4135 Auto Park Circle
Chantilly, VA 20151

FORD LINCOLN

(703) 660-9000

6129 Richmond Hwy
Alexandria, VA 22307

CHRYSLER JEEP DODGE RAM

(703) 329-1600

5900 Richmond Hwy
Alexandria, VA 22303

FAIRFAX TOYOTA

(703) 359-1010

10287 Fairfax Blvd
Fairfax, VA 22030

CHEVROLET BUICK GMC

(703) 329-1300

1800 Richmond Hwy
Alexandria, VA 22303

CHANTILLY KIA

(703) 263-2500

4105 Auto Park Circle
Chantilly, VA 20151

ALEXANDRIA KIA

(571) 775-8600

8670 Richmond Hwy
Alexandria, VA 22309



WWW.OURISMANVA.COM



JAMIL A.C. MANGAN (*Colonel Race*) has graced stages from Everyman Theatre in Baltimore where he portrayed Harmond Wilkes in *Radio Golf*, to Repertory Theatre of St. Louis as Monsieur Bouc in *Murder on the Orient Express*, and the Contemporary American Theater Festival as Bear in *North of the Boulevard*. In NYC, he played Sergeant in *Mother Courage* at Classic Stage Company alongside Tony Award winner Kecia Lewis. Regionally, Jamil earned the Connecticut Critics Circle Award for Best Actor as Troy Maxson in *Fences* at Playhouse on Park. Jamil also played Othello at Perseverance Theatre and MLK Jr. in *The Mountaintop* at TheaterWorks Hartford. His TV work includes *FBI* (CBS), *Blue Bloods* (CBS), *Manifest* (NBC), and *Gotham* (FOX). Instagram: @jamilacts



RYAN MICHAEL NEELY (*Ramses Praed*) is thrilled to be making his Arena Stage debut. DC credits include *King Lear* with Patrick Page, *Much Ado About Nothing* (dir. Simon Godwin), *Our Town*, and *The Merchant of Venice* (Shakespeare Theatre Company). Other regional credits include the title role in *Hamlet* (StoryTellers Theater), *A Midsummer Night's Dream* (Pennsylvania Shakespeare Festival), *Pride and Prejudice* (Classic Theatre of Maryland), *East of Heart Mountain* (dir. Giovanna Sardelli), *House for Sale* (dir. Daniel Fish), and *Twelfth Night* (Shakespeare's Globe, UK). New York credits include *Hamlet* (L+F), *Romeo and Juliet* (Secret Theatre), and *The Book of Z...* (Manhattan Rep). TV credits include *One Life to Live*, *Monumental Mysteries*, and *A Day Late and Ten Pounds Overweight* (Winner: Top Indie Film Awards). BFA: Rutgers, Mason Gross. MFA: GW/STC Academy.



NANCY ROBINETTE (*Salomé Otterbourne*) was most recently seen at Arena in *The Heiress*, *Well*, and *Ah, Wilderness!*. Other recent roles in DC include Nan in *Jennifer Who Is Leaving* (Round House), Carrie in *The Trip to Bountiful* (Ford's), Bubbe in *The Chameleon* (Theater J), and Aunt Barb in *Problems Between Sisters* (Studio). She was recently on Broadway in *Prayer for the French Republic* (Manhattan Theatre Club), and earlier in *The Curious Incident of the Dog in the Night-Time*. For *Prayer*, she received an Outer Critics Circle nomination; for her 40-plus years in DC theater, she received a Helen Hayes Tribute.



ROBERT STANTON (*Atticus Praed*) has appeared at Shakespeare Theatre Company as Mr. Puff in *The Critic & Moon* in *The Real Inspector Hound*, winning an Emery Battis Award; and as Charles Marsden in *Strange Interlude*. He recently performed *Uncle Vanya* at Lincoln Center, having also appeared on Broadway in *Ink*, *Saint Joan*, *A Free Man of Color*, *Mary Stuart*, and *The Coast of Utopia*. Two dozen Off-Broadway credits include an Obie Award for *All in the Timing*, and *Love Child*, written and performed with Daniel Jenkins; Off-Off-Broadway credits include *The Gold Room*. Films include *Confessions of a Shopaholic*, *Find Me Guilty*, *Next Stop Wonderland*, *Washington Square*, *Dennis the Menace*, *Bob Roberts*, and *A League of Their Own*. Recent television includes *Blue Bloods*, *Pretty Little Liars: Original Sin*, and *Mr. Mercedes*.



TRAVIS VAN WINKLE (*Simon Doyle*) was most recently seen in an adaptation of *Cat on a Hot Tin Roof* as Brick at the Stella Adler Theatre. Presently he can be seen in the Netflix/Skydance action comedy *Fubar*. Other television series regular roles include *You*, *The Last Ship*, and *Instinct*. Past recurring roles include *Made for Love*, *Hart of Dixie*, and *Happy Endings*. His film credits include *Road House*, *Friday the 13th*, *Meet the Spartans*, *Transformers*, and *Accepted*. Travis is a proud mentor in the Big Brothers Big Sisters program of Los Angeles and serves as a member on their Junior Board. He is also a Global Ambassador for the nonprofit BuildOn, building schools in Haiti, Malawi, Nepal, Nicaragua, and Senegal. Instagram: @travisvanwinkle



SUMIÉ YOTSUKURA (*Rosalie Otterbourne*) is delighted to return to Arena Stage after appearing this past spring in the ensemble of *Unknown Soldier*. She has also appeared as Gussie in *Merrily We Roll Along* (Keegan Theatre), Hodel in *Fiddler on the Roof* (Olney Theatre Center), and was most recently seen in the ensembles of Signature Theatre's *Soft Power* and Creative Cauldron's *Sondheim Tribute Revue*. Other favorite DC credits include *King of the Yees* (Signature Theatre) and *The Mortification of Fovea Munson* (Kennedy Center TYA). Her regional credits include *The Full Monty* (Transcendence Theatre Company). She received her BA in Theatre and Asian & Pacific Islander American Studies from William & Mary. Instagram: @sumieyotsukura



BRANDON HAAGENSON (*u/s Ramses Praed, Simon Doyle*) is thrilled to return to Arena Stage after last year's *Angels in America, Part One: Millennium Approaches*. His other DC credits include *The Play That Goes Wrong* at The Kennedy

Center, and *Our Town* and *The Merchant of Venice* at Shakespeare Theatre Company. He has performed Off-Broadway in *The Play That Goes Wrong* (New World Stages) and *Afterglow* (original cast). National Tours include *Beauty and the Beast* (Lumière) and *A Christmas Carol*. His favorite regional credits include Chicago Shakespeare Theater, Florida Repertory, Stages St. Louis, Riverside Theatre, North Carolina Theatre, and North Shore Music Theatre. Television appearances include *The Other Two* (HBO Max) and *The Food That Built America* (History Channel). He also tours the world with the musical trio, the MidAtlantic Men. He holds an MFA in Classical Acting from STC's Academy at The George Washington University, and he has a BFA in Musical Theater from Millikin University. Love to his family and friends for their unending support.

www.brandonhaagenson.com

Instagram: @brandonhaagenson



LILLI HOKAMA (*u/s Linnet Ridgeway, Jacqueline de Bellefort, Rosalie Otterbourne*) is grateful to be debuting at Arena with this charming ensemble. DC credits include *A Midsummer Night's Dream* and *Amadeus* at Folger Theatre.

Most recently, Lilli worked with the Fine Arts Center in CO for *Water by the Spoonful*, where she also did *Elf The Musical* and *Guadalupe in the Guest Room*. Past acting highlights include *The Wolves* (Lincoln Center Theater); *Little Women* (Dallas Theater Center/The Old Globe); *Now Circa Then, I and You* (Chester Theatre); *Matt and Ben* (Kitchen Theatre Company); and *Antigone* (Baltimore Center Stage). She also presented an original story for *We Hear You—A Climate Archive*, presented at The Kennedy Center and Dramaten, the Royal Dramatic Theatre in Stockholm. TV credits include *Prodigal Son* and several short films including *Jellybones* and *Chip!*. She has done voice acting and motion capture for Khan Tran in the new Telltale game, *The Expanse*. Directing credits include *Night of the Living Dead* at Rorschach Theatre, *Red*, *Henry Makes a Bible* at Ensemble Studio Theatre, and the world premiere of AJ Clauss' *Rat Jaw* at their co-owned theater company, Stomping Ground Theatre, which focuses on bringing high fidelity art to rural America. It is an honor and privilege for Lilli to be here, eternal gratitude to her partner, family, and friends.



KEITH RICHARDS (*u/s Hercule Poirot, Septimus Troy, Colonel Race, Atticus Praed*) is thrilled to be making his Arena Stage debut. DC credits include *Peter and the Starcatcher* (Helen Hayes Award) at Constellation

Theatre; Disney's *Beauty and the Beast* at Imagination Stage; *Oliver!* and *James and the Giant Peach* (Helen Hayes Award) at Adventure Theatre. National Tours include *Don't Let the Pigeon Drive the Bus!* with The Kennedy Center, J. M. Barrie's *Peter Pan* with 360 Entertainment, and *A Christmas Carol* with Nebraska Theatre Caravan. Other regional credits include *Shakespeare in Love* at Virginia Rep; *9 to 5, A Tale of Two Cities* at Barter Theatre; *The Odd Couple* at Mill Mountain Theatre; *Hello, Dolly!* and *Pirates of Penzance* at Music Theatre Works of Chicago. TV credits include *American Titans*, *Deadly Demands* on Discovery, and *Sultan and the Saint* on PBS. www.keithrichards.com
Instagram: @keithrichardsactor



ERIKA ROSE (*u/s Annabelle Pennington, Salomé Otterbourne*) has performed Off-Broadway in *Here There Are Blueberries* (New York Theatre Workshop). Regional: *Here There Are Blueberries* (STC); *Tiny Beautiful Things* (Baltimore Center Stage); *Confederates*, *The Cymbeline Project* (OSF); *An Octoroon*, *Mr. Burns, a Post-Electric Play* (Woolly Mammoth Theatre Company); *Crying on Television*, *Queens Girl in Africa* (Everyman Theatre); *Queens Girl in Africa* (Mosaic Theater Company, Helen Hayes Award for Outstanding Lead Actress); *In Darfur* (Theater J, Helen Hayes Award for Outstanding Lead Actress); *Fences* (Ford's Theatre); *The Father* (Studio Theatre); *Don't Let The Pigeon Drive The Bus! The Musical!*, *Knuffle Bunny*, *The Brand New Kid*, *OLIVERio*, *Barrio Grrr!* (The Kennedy Center); *Clybourne Park* (Pioneer Theatre Company); *Cinderella*, *Looking for Roberto Clemente*, *Mufaro's Beautiful Daughters* (Imagination Stage); *Book Club Play*, *Pippin* (Round House Theatre). Film: *The Cymbeline Project* with Scarlett Kim; *Anesthesia*; *Black Sorority Project: The Exodus*. Company Member: Woolly Mammoth Theatre Company.

Instagram: @erikaroseart

CREATIVE

AGATHA CHRISTIE (*Author*) is known throughout the world as the Queen of Crime. Her books have sold over a billion copies in English with another billion in foreign languages. She is the most widely published author of all time and, in many languages, outsold only by the Bible and Shakespeare. She is the author of 66 crime novels, 150 short stories, over 25 plays, and six novels written under the name Mary Westmacott. Her work includes *Murder on the Orient Express*, *Death on the Nile*, and the genre-defining *And Then There Were None*. Agatha Christie's first novel, *The Mysterious Affair at Styles*, was written towards the end of the First World War, in which she served in the VAD. In it she created Hercule Poirot, the little Belgian detective who was destined to become the most popular detective in crime fiction since Sherlock Holmes. It was published by Bodley Head in 1920. In 1926, after averaging a book a year, Agatha Christie wrote her first masterpiece. *The Murder of Roger Ackroyd* was the first of her books to be published by Collins and marked the beginning of an author-publisher relationship that lasted for 50 years and well over 70 books. *Ackroyd* was also the first of Agatha Christie's books to be dramatized—under the title *Alibi*—and to have a successful run in London's West End. By 1930, Agatha had introduced a new character to act as detective. When she created Miss Marple, Agatha did not expect her to become Poirot's rival, but with *The Murder at the Vicarage*, Miss Marple's first full-length outing, it appeared she had produced another popular and enduring character. *The Mousetrap*, her most successful play of all, opened in 1952 and is the longest-running play in history. Agatha Christie was made a dame in 1971. She died in 1976. Agatha Christie Limited (ACL) has been managing the literary and media rights to Agatha Christie's works around the world since 1955, working with the best talents in film, television, publishing, stage, and on digital platforms to ensure that Christie's work continues to reach new audiences in innovative ways and to the highest standard. The company is managed by Christie's great-grandson James Prichard. Visit www.agathachristie.com for more information.

KEN LUDWIG (*Playwright*) is the most performed playwright of his generation. He has had six productions on Broadway and eight in London's West End, and his 34 plays and musicals are staged around the world and throughout the United States every night of the year. They have been produced in over 20 languages in more than 30 countries, and many have become standards of the American repertoire. His first play, *Lend Me a Tenor*, won two Tony Awards and was called "one of the classic comedies of the 20th century" by *The Washington Post*. *Crazy For You* was on Broadway for five years, on the West End for three, and won the Tony and Olivier Awards for Best Musical. It has been revived in London twice. His play *Murder on the Orient Express* is currently on a year-long tour of the United Kingdom and Ireland. In addition, he has won the Edwin Forrest Award for contributions to the American theater, two Laurence Olivier Awards, two Helen Hayes Awards, the Charles MacArthur Award, and the Edgar Award for Best Mystery of the Year. He also won the Samuel French Award as Playwright of the Year, and he was nominated for an Emmy Award for writing the Kennedy Center Honors. He has had three previous world premieres at Arena Stage, *Shakespeare in Hollywood*, *Baskerville*, and *Dear Jack, Dear Louise*. Other plays include *Moon Over Buffalo*, *Leading Ladies*, *Sherwood*, *Twentieth Century*, *A Fox on the Fairway*, *A Comedy of Tenors*, and *The Game's Afoot*. His plays have starred, among others, Alec Baldwin, Carol Burnett, Tony Shalhoub, Joan Collins, Lynn Redgrave, and Kristen Bell. His book *How to Teach Your Children Shakespeare*, published by Penguin Random House, won the Falstaff Award for Best Shakespeare Book of the Year, and has just been released in a new, expanded edition. His essays on theater are published in the *Yale Review*, and he gives the Annual Ken Ludwig Playwriting Scholarship at the Kennedy Center American College Theater Festival. His first opera, *Tenor Overboard*, opened at the Glimmerglass Festival in 2022. His most recent world premieres were *Lend Me A Soprano* and *Moriarty*, and his newest plays and musicals include *Pride and Prejudice Part 2: Napoleon at Pemberley*, *Beginner's Luck*, and *Easter Parade*. His latest play, *Lady Molly of Scotland Yard*, will premiere this season at the Asolo Repertory Theatre in Sarasota, Florida, and *Dear Jack, Dear Louise* will open in January in New York City at 59E59. For more information, visit www.kenludwig.com.



Perfect Pre-Show Dinner!

DELICIOUS AND GREAT VALUE LOCATED JUST STEPS AWAY FROM ARENA STAGE

DINNER & SHOW

\$39 THREE-COURSE DINNER

Start your evening with a delicious three-course prix fixe menu, then walk over to see the show.

Save 50% on Bottles of House Wine to pair with your dinner!

- Show your Arena Stage ticket and enjoy 10% off our a la carte menu if you don't opt for the 3-course dinner.

- Offer not valid with Prix Fixe Menu, Wine Special, or any other offers or promotions.



Dinner Coupon

\$39 THREE-COURSE DINNER

Reserve Your Table Now!

1101 4th St, SW Washinton, DC 20024

Phone: (202) 488-0987 | www.station4dc.com

Coupon is redeemable for one guest per table and can only be used once. Valid for Arena Stage ticket holders only. Not valid for add-ons or any other promotions or discounts. Offer expires 06/30/2025.

Cut Here

HANA S. SHARIF (*Director*) has directed acclaimed productions of *Murder on the Orient Express* (7 STLCC nominations), *A Christmas Carol* (4 STLCC nominations, STL A-List Award), *Pride and Prejudice* (5 STLCC nominations), *Porgy and Bess*, *The Who & The What* (3 SFBA Critic Circle nominations), *Fun Home*, *Sense and Sensibility*, *The Christians*, *Les Liaisons Dangereuses*, *Pride and Prejudice* (DCArts: Best Director/Best New Play), *The Whipping Man*, *Gem of the Ocean* (six CCC nominations), *Gee's Bend* (CCC Award Best Ensemble, two nominations), *Next Stop Africa*, *Cassie*, *The Drum*, *Identity*, *Pretty Fire*, *Patient 463*, *I, Marcus Garvey*, *Quicksand*, *Hospice*, and *The Blacker The Berry*. Her plays include *All the Women I Used to Be*, *The Rise and Fall of Day*, and *The Sprott Cycle Trilogy (1880, 1964, 2010)*.

ALEXANDER DODGE (*Set Designer*)'s Arena Stage credits include *Catch Me If You Can*, *Noises Off*, and *On the Jump*. Broadway: *I Need That*, *Anastasia* (Outer Critics nomination), *A Gentleman's Guide to Love and Murder* (Tony, Drama Desk and Outer Critics nominations), *Present Laughter* (Tony nomination), *Old Acquaintance*, *Butley*, *Hedda Gabler*. Off-Broadway: *Russian Troll Farm*, *Harry Clarke*, *Whisper House*, *The Understudy*, *Observe the Sons of Ulster Marching Towards the Somme* (Lucille Lortel Award). London West End: *Harry Clarke*, *All New People*. Other: Disney's *Hunchback of Notre Dame* at La Jolla and Paper Mill Playhouses, Japan, Germany, and Austria. DC: Shakespeare Theatre, Folger. Opera: *Samson et Dalila* at Metropolitan Opera, *The Thirteenth Child* at Santa Fe, *Ghosts of Versailles* at LA Opera, *Il trittico* at Deutsche Oper Berlin. Training: MFA Yale. Instagram: @alexanderdodgedesign

KAREN PERRY (*Costume Designer*)'s previous Arena Stage credits include *A Time to Kill* and *Resurrection*. She has designed costumes for *Lady Day at Emerson's Bar & Grill* (Syracuse Stage), *Destiny of Desire* (Old Globe), *Clyde's* (Berkley Rep/Huntington Theatre, Norton Award for Best Costume Design), *Wine in the Wilderness* (Two River Theater), *A Raisin in the Sun* (NYSF Public Theatre), *Personality: The Lloyd Price Musical* (People's Light), and *Lackawanna Blues* (Broadway & Mark Taper Forum). Karen has designed nine of the 10 August Wilson Century Cycle plays (she has yet to design *Fences*). Upcoming: The new adaptation of Karen Zacarias' *Destiny of Desire: A Telenovela*

Musical, directed by Ruben Santiago-Hudson, due soon on Broadway." Television credits include *The Gregory Hines Show*, *Saturday Night Live*, and *The Brother from Another Planet*. She has received a Norton Award, Lucille Lortel Award, LA Ovation Awards, a CDG Award, an Ace Award, and a Hewitt Award; is an Emmy and AUDELCO Award nominee; and is a nine-time NBTF Award recipient and Lifetime Achievement honoree.

KENNETH POSNER (*Lighting Designer*) is happy to return to the Arena Stage having last designed the 1996 production of Tom Stoppard's *Arcadia*. He designs extensively on and Off-Broadway, for resident theaters and touring productions throughout the United States as well as internationally. Selected Broadway and West End credits include *Doubt*, *Beetlejuice*, *Mr. Saturday Night*, *Pretty Woman*, *Mean Girls*, *War Paint*, *Disgraced*, *On Your Feet!*, *If/Then*, *Kinky Boots*, *Pippin*, *Cinderella*, *Hairspray*, *Dirty Rotten Scoundrels*, *Legally Blonde*, *Lend Me a Tenor*, *Catch Me If You Can*, *The Coast Of Utopia—Shipwreck*, *Other Desert Cities*, *The Merchant of Venice*, *The Little Foxes*, *The Adventures of Tom Sawyer*, *Finding Neverland*, and *Wicked*. He is a graduate of SUNY at Purchase and is the recipient of the Tony, Drama Desk, Outer Critics Circle, Lucille Lortel, Joseph Jefferson, Henry Hewes, and Obie Awards.

CHARLES COES (*Original Music and Sound Design*) is happy to be back at Arena where he designed *Jitney*. His work has been seen at Ford's with *Parade* and at STC with *Servant of Two Masters*. NY highlights include *Comedia of Errors* with the Public's Mobile Unit, *Beautiful Lady* at La MaMa, *Sing Street* at NYTW, *Letters of Suresh* at Second Stage, and *Golden Shield* at MTC. Recent regional work includes *Song of Rome* at Spoleto, *The Pianist* at George Street, and *Lehman Trilogy* at The Huntington and St. Louis Rep. He's toured the world with the Homer's Coat production of *An Iliad*, and been an associate on many Broadway shows including *Girl from the North Country*, *To Kill a Mockingbird*, *Vanya and Sonya and Masha and Spike*, and *Peter and the Starcatcher*.

NATHAN A. ROBERTS (*Original Music and Sound Design*) is a multi-instrumentalist, composer, instrument-maker, and sound designer who specializes in creating original music and soundscapes for plays, often live onstage. He is thrilled to be making his Arena Stage debut! DC Theater: *The Widow Lincoln*, *Our Town*

(Ford's Theatre); *The Servant of Two Masters* (Shakespeare Theatre). Off-Broadway: *Golden Shield* (Manhattan Theatre Club); *Letters of Suresh* (Second Stage); *Crane Story*, *Dramatis Personae* (The Playwrights Realm). Regional: *The Way the Mountain Moved*, *Sense and Sensibility* (Oregon Shakespeare Festival); *Miss You Like Hell*, *Fun Home*, *The Christians*, *Les Liaisons Dangereuses* (Baltimore Center Stage); *Animal Farm* (Milwaukee Rep); *Sense and Sensibility* (Dallas Theater Center/Guthrie Theater); *Tokyo Fish Story* (The Old Globe). Education: MFA, Yale School of Drama. Faculty: Senior Lecturer in Theater, Dance, and Performance Studies, Yale University.

BRITTANY BLAND *she/her/they* (Projection Designer) is a passionate storyteller dedicated to fostering empathy through her work as a projection designer for the stage. She has an extensive portfolio that includes designs for theater, dance, immersive media, and opera. Her notable recent credits include *Cats: The Jellice Ball*, *Becoming a Man* at A.R.T., *Westerly Breath* at the Met Museum, *Amani* at Rattlestick Theater, *A Raisin in the Sun* at the Public Theater, and *Goddess* at Berkeley Repertory Theatre. Brittany holds an MFA from the Yale School of Drama and is a proud recipient of the 1/52 Project grant, which supports emerging theater artists.

LASHAWN MELTON (*Hair and Wig Designer*) is a native Washingtonian hair and wig designer. Arena Stage credits include *The Other Americans* (Hair Design), *Tempestuous Elements* (Wig Design), *Disgraced* (Hair Design), *Smart People* (Assistant Wig Design), *Nina Simone: Four Women* (Assistant Wig Design), *Pajama Game* (Assistant Wig Design), and *Snow Child* (Hair and Makeup Design). Regional wig design credits include *The Winter's Tale* (Folger Shakespeare Theatre); *Raisin in the Sun*, *Emma the Musical*, *The Play That Goes Wrong* (Utah Shakespeare Festival); *On Your Feet!* (GALA Theatre); *The Sensational Sea Minkettes*, *Describe the Night*, *Fairview*, *Botticelli in the Fire* (Woolly Mammoth Theatre); *The Watsons Go to Birmingham – 1963* (The Kennedy Center); *Comedy of Tenors* (Olney Theatre); and *School Girls* (Round House Theatre). TV/Film hairstylist credits include *Lioness*, *White House Plumbers*, *Rustin*, and *Fellow Travelers*. Education: BA in Art, University of the District of Columbia.

SORDELET INC. – RICK SORDELET (*Fight Director and Intimacy Consultant*), along with Christian and Collin Kelly-Sordelet created Sordelet Inc., a Native-owned action movement company

with 35+ years' experience. Sordelet Inc. has over 80 Broadway productions to their credit, including *The Lion King*, *Beauty and the Beast* and, in 2025, *Stranger Things: The First Shadow*, also *Peter Pan* and *Tina* National Tours currently running, plus 53 first-class productions worldwide, as well as numerous films, operas, live events, and loads of television productions. They teach at William Esper Studio, HB Studio, CUNY Harlem, Montclair State, and 22 years at Yale School of Drama. Rick is a board member for Red Bull Theater. They also run Sordelet Ink, with author David Blixt, an e-publishing company for the emerging writer. To learn more, visit www.sordeletinc.com and www.sordeletink.com. Instagram: @sordeletinc

LISA NATHANS (*Dialect and Vocal Coach*) is thrilled to be coaching again for Arena Stage with this fabulous team after previously coaching *The Other Americans*, *Data*, *POTUS*, *Holiday*, *Catch Me If You Can*, *Disney's Newsies*, *Anything Goes*, and others. Other DC credits include various productions with The Kennedy Center Theater for Young Audiences, Shakespeare Theatre Company, Olney Theatre Center, Signature Theatre, Theater Alliance, Keegan Theatre, and MetroStage. Regional credits include Guthrie Theater, 5th Avenue Theatre, and Theatricum Botanicum. TV credits include National Geographic. Teaching (USA and UK): University of Maryland: TDPS (Associate Professor, Voice, Speech, and Acting); CalArts; Stella Adler Academy; RADA; Royal Welsh; Royal Central; University of Washington (PATP MFA); and University of Minnesota (Guthrie BFA). Training: Royal Central School of Speech and Drama: MFA (Voice Studies); Boston University: BFA (Acting); Linklater Voice Designation; and Colaanni Speech Practitioner. Break legs all!

OTIS RAMSEY-ZÖE (*Dramaturg*) is a care worker, dramaturg, director, theater arts educator, and Literary Manager at Arena Stage. He has developed new works at such institutions as Sundance Institute, Kennedy Center, Alabama Shakespeare Festival, Playwrights Center, and National New Play Network. He has held posts in Dramaturgy at the David Geffen School of Drama at Yale and Carnegie Mellon University, Theatre at Northeastern University, Women's Studies and Honors Humanities at the University of Maryland, Performing Arts

at American University, and Theatre Arts at Howard University. He was Associate Artistic Director at banished? productions, Future Classics Program Coordinator at the Classical Theatre of Harlem, Literary Manager at Center Stage, and an Allen Lee Hughes Senior Fellow at Arena Stage.

CAPARELLIOTIS CASTING (*New York Casting*)

Select Broadway/Off-Broadway: *Mary Jane*; *Prayer for the French Republic*; *Jaja's African Hair Braiding*; *2:22 A Ghost Story*; *Grey House*; *Summer, 1976*; *The Comeuppance*; *Ohio State Murders*; *Cost of Living*; *Macbeth*; *The Minutes*; *Skeleton Crew*; *Ink*; *Letters From Max*; *Who's Afraid of Virginia Woolf?*; *The Waverly Gallery*; *Boys in the Band*. Select theaters: Signature NYC, Atlantic, Ars Nova, The Old Globe, CTG. TV/Film: *New Amsterdam* (NBC, series casting), *The Boys in the Band* (Netflix, original casting).

RAIYON HUNTER (*DC Casting*) is a casting director, producer, and arts administrator from New Orleans, Louisiana. She currently works as the Casting Director/Line Producer of Arena Stage. Previously, she worked as the Casting Director of Children's Theatre Company and the Spelman Leadership Fellow at the Alliance Theatre (Atlanta, GA) where she has contributed to a multitude of shows in varying capacities ranging from Casting Associate to Director on productions such as *Do You Love the Dark?*, *Darlin' Cory*, *Bina's Six Apples*, *Good Bad People*, *Confederates*, and more. Additionally, she has been in residency at Oregon Shakespeare Festival under Natakai Garrett and The Repertory Theater of St. Louis under Hana S. Sharif.

ASHLEY D. POLASEK (*she/her Creative Associate*)

is the Executive Director of The Ken Ludwig Company. Credits include Agatha Christie's *Murder on the Orient Express* at Chichester Festival Theatre and UK National Tour; *Crazy For You* at Chichester Festival Theatre and West End; and the world premieres of *Tenor Overboard* at Glimmerglass Festival (Script Associate), Ken Ludwig's *Lend Me A Soprano* at Alley Theatre (Creative Associate), Ken Ludwig's *Moriarty* at Cleveland Play House (Creative Associate), and Ken Ludwig's *Lady Molly of Scotland Yard* (Creative Associate). She holds a doctorate in Adaptation Studies, lecturing on her specialization, Sherlock Holmes adaptations, across the US, UK, Continental Europe, and Asia, and serving as a technical advisor for film

and television, most recently on *Enola Holmes* (Legendary Pictures) and *Let's Go Luna!* (PBS Kids). She is the author of several books and dozens of chapters and academic journal articles on adaptations of Sherlock Holmes, is a Fellow of the Royal Society of Arts, editor-in-chief of the interdisciplinary journal *The Conan Doyle Review*, and a member of the Baker Street Irregulars.

CHRISTI B. SPANN (*Stage Manager*)

has been working as a stage manager in DC since 2011. Recent Arena Stage productions include *Holiday*, *The High Ground*, *Exclusion*, *POTUS*, and *Tempestuous Elements*. She previously spent 12 seasons on the stage management staff at the Denver Center Theatre Company and has also worked with The Great River Shakespeare Festival in Winona, MN, and Virginia Repertory Theatre in Richmond, VA.

DAYNE SUNDMAN (*Assistant Stage Manager*)

is always glad to be back at Arena Stage. Past favorite shows at Arena include *Unknown Soldier*; *POTUS*; *Angels in America, Part One: Millennium Approaches*; *American Prophet: Frederick Douglass in His Own Words*; *Catch Me If You Can*; *Newsies*; *The Heiress*; and *Anything Goes*. Other credits include *Murder on the Orient Express* (Great Lakes Theater); *Natasha, Pierre & The Great Comet of 1812*, *Sense and Sensibility* (Idaho Shakespeare Festival); *Jane Anger*, *The Notebooks of Leonardo da Vinci* (STC); *The Great Society*, *Born Yesterday*, and *The Little Foxes* (Asolo Repertory Theatre). Allen Lee Hughes Fellow. Baldwin Wallace University 2015.

ARENA STAGE LEADERSHIP

HANA S. SHARIF (*Artistic Director*)

has enjoyed a multi-faceted theater career, including roles as an artistic leader, director, playwright, and producer with a specialty in strategic and cross-functional leadership. Hana began her professional career as an undergraduate student at Spelman College. From 1997 to 2003, Hana served as the co-founder and Artistic Director of Nasir Productions, a theater dedicated to underrepresented voices

challenging traditional structure. Hana joined the Tony® Award-winning regional theater, Hartford Stage, in 2003. During her decade-long tenure at Hartford Stage, Hana served as the Associate Artistic Director, Director of New Play Development, and Artistic Producer. Hana launched the new play development program, expanded the community engagement and civic discourse initiatives, and developed and produced Tony®, Grammy, Pulitzer, and Obie Award-winning shows. Starting in 2012, she served as Program Manager at ArtsEmerson, a leading world theater company based at Boston's Emerson College. During her tenure at ArtsEmerson, Hana launched an Artists in Residency program, led a research program assessing barriers to inclusion across the region, and leveraged her regional theater experience to freelance produce for smaller theater companies looking to expand and restructure their administrative teams. Hana was Baltimore Center Stage's Associate Artistic Director from 2014 to 2019 and was the architect of the innovative CS Digital program: a platform that pushes the boundaries of traditional theater and looks at the nexus point between art and technology. Her other achievements at Baltimore Center Stage included prototyping the Mobile Unit focused on historically underserved audiences, strengthening community engagement, producing multiple world and regional premieres, and helping to guide the theater through a multi-million dollar building renovation and rebranding effort. Hana became the first Black woman to lead a major regional theater in 2018 when she was named the Augustin Family Artistic Director of The Repertory Theatre of St. Louis. During her tenure at The Rep, Hana guided the organization through a strategic alignment, revolutionized the New Works program, expanding access to underserved communities, and centering equity and anti-racism as the organization's foundational values. Hana holds a BA from Spelman College and an MFA from the University of Houston. Hana is the recipient of USITT's 2023 Distinguished Achievement Award, Spelman's 2022 National Community Service Award, the 2009-10 Aetna New Voices Fellowship, EMC Arts Working Open Fellowship, and Theatre Communications Group (TCG) New Generations Fellowship. Hana is a founding member of The Black Theatre Commons (BTC). She serves on the board of directors for the TCG, BTC, and the Sprott Family Foundation.

EDGAR DOBIE (*Executive Producer*) Born in Vernon, British Columbia, a village next to the Rocky Mountains (three years after Arena had its first performance in 1950), I am one of five brothers raised by my Dad Edgar, a mechanic and small businessman, and Mom Connie, a telephone operator and union organizer. I am the only Dobie to make a career in theater. Luckily for me, drama was an arts elective I was offered at the tender age of 12 so I hung up my hockey skates and joined the drama class, led by teacher Paddy Malcolm and her fledgling Powerhouse Community Theater after school. By the time I graduated from high school, we volunteers had built ourselves a 200-seat, fully equipped theater on its own piece of land in the center of town and found a sold-out audience for the full season of plays we had on offer. That experience taught me so many lessons about the power of theater to foster collaboration and share meaningful stories, as well as the public values that attach themselves to building a safe place where everyone is welcome. All those lessons served me well as a managing leader and producer both sides of the border and both sides of the commercial and non-profit theater divide. Arriving here in Southwest with my good wife Tracy and our daughter Greta Lee in 2009 makes me feel like I am well-equipped to do a good job for you all. I am honored to have been recognized for my service to, and leadership of, the Washington, D.C.-area theater community as a recipient of Theatre Washington's inaugural Victor Shargai Leadership Award in 2022.

This theater operates under an agreement between the League of Resident Theatres and Actors' Equity Association.



The actors and stage managers are members of Actors' Equity Association, the Union of Professional Actors and Stage Managers in the United States.



The scenic, costume, lighting and sound designers in LORT theaters are represented by United Scenic Artists, Local USA-829 of the IATSE.



The Director and Choreographer are members of the STAGE DIRECTORS AND CHOREOGRAPHERS SOCIETY, a national theatrical labor union.

Arena Stage is a constituent of the Theatre Communications Group (TCG), the national organization for the American theater.



Amplifying artists of every age.

AARP celebrates artists over 50 of every form. Through our Brain Health work, we know that art keeps us mentally sharp, as it connects us and preserves our collective story. We're uplifting these dynamic artists who have mastered their craft in the areas of costume design, dance and hip-hop music.

Nasha Thomas
National Director,
AileyCamp Master Teacher

Ruth E. Carter
Award-Winning
Costume Designer

Doug E. Fresh
Hip-Hop Legend



Discover more today at
[AARP.org/BlackCommunity](https://www.aarp.org/BlackCommunity)

Today is the day to
inspire, delight
and amaze.



We're proud to support Arena Stage and the joy you bring to our
community every day.

pnc.com



BOARD OF TRUSTEES

CHAIR

Catherine
Guttman-McCabe

IMMEDIATE PAST CHAIR

Decker Anstrom

VICE CHAIRS

Michele G. Berman
Deborah E. Bowles
Jeffrey M. Busch
Susan Carter
Celandra Deane-Bess
Edgar Dobie
Kristen Donoghue
David Fisher
Stephenie Foster
Rick Froehlich
Nicholas Goad
Sue Henry
Vicki J. Hicks
Alethia Jackson
David B.H. Martin
Richard A. Newman
Tiffany Sanchez
Hana S. Sharif
Mignon Smith

TRUSTEES

Jan Adams
Andrew R. Ammerman
Linda A. Baumann
Anthony Coley
Jeri Epstein
Richard Feinstein
Raymond Janvier
Dr. Donald Wallace Jones
Ricki Kanter
Danny Korengold
Daphne Kwok
Elissa Leonard
John Lynham
B. Thomas Mansbach
Jill McGovern
David E. Shiffrin
Tiffany Sanchez
Michael S. Steele
Karen Zacarias

HONORARY TRUSTEES

Jim Abdo
Ashok Bajaj
Joanne Barker
Sander Bieber
Steven R. Bralove
Susan Haas Bralove
Eric Braverman
Joseph P. Digangi
John Edelmann
Elliot Feldman
Nancy M. Folger
Natwar Gandhi
Patti Herman
Judy Lansing Kovler
Mark Levine
Ronald A. Paul M.D.
Terry R. Peel
Beverly Perry
Lucia Riddle
Ilene Rosenthal
Gene Samburg
Raymond Sczudlo
David Bruce Smith
Richard W. Snowdon
Sheila Stampfli
Margaret Tomlinson
Michele P. Toth
Shawna Watley

LIFE TRUSTEES

Lee G. Rubenstein
Beth Newburger Schwartz

YOUNG PATRONS BOARD TRUSTEE

Victoria Clark Hunter

EMERITUS TRUSTEES

John M. Derrick
Arlene and Robert Kogod
David O. Maxwell
Joan P. Maxwell

CORPORATE OFFICERS

PRESIDENT/EXECUTIVE

PRODUCER

Edgar Dobie

TREASURER

Judy Leventhal

SECRETARY

Alison Irvin

YOUNG PATRONS BOARD

The Arena Stage Young Patrons Board seeks to strengthen and support the future of American theater at Arena Stage. The Young Patrons Board supports the artistic mission of Arena Stage by being active ambassadors to the community and arranging opportunities for people under 40 years old to engage with the theater.

MEMBERS

Michael F. Baylis II
Julie Alderman Boudreau
Dr. Adrienne Brown

Dr. Alexandria Edwards
Soshana Golden
Whitney Hubbard
Linda Irizarry

Lucrecia Johnson
Ashley Lawrence
Lauren Pate
Emily Rouse

Hillary Stemple
Michael Walker

CHAIR

Victoria Clark Hunter

CONTINUE SUPPORTING THE ARTS

LEAVE A LEGACY

HERE AT ARENA STAGE

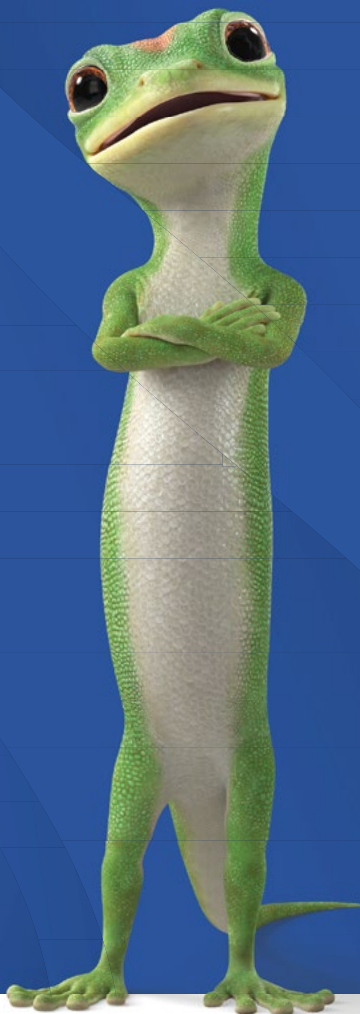
Everyone needs an estate plan to ensure their assets benefit the people and causes they value the most. Please consider leaving a gift in your will or designating Arena as a beneficiary of your retirement plan or Donor Advised Fund to help future generations enjoy theater. If you have already included Arena, let us know so we can include you in the Full Circle Society.

For more information, contact **Maya Weil, CAP®**, Arena's Gift Planning Specialist at 202-600-4158 or mweil@arenastage.org



GEICO Philanthropic Foundation

We know the only way to build stronger communities for tomorrow is to invest our time and energy today. We call it our insurance plan for the future and it's a policy we're proud of.



GEICO | PHILANTHROPIC FOUNDATION



ARENA STAGE'S PLANNED GIVING PROGRAM

Arena Stage gratefully acknowledges these individuals who ensure the future of Arena Stage by making a planned gift. These gifts assure that Arena Stage will continue to challenge, educate, and entertain audiences, and maintain its excellence in theater nationally, and internationally for generations to come.

Arena can help you accomplish your personal, family, and philanthropic goals while benefiting the theater. Supporters who make planned gifts to Arena are invited to join the Full Circle Society and enjoy special benefits.

For more information about planned giving, please contact Maya Weil at 202-600-4158.

The following are members as of October 24, 2024.

MEMBERS

Anonymous (11)
 Esthy* and Jim Adler
 Dr. Bill Santford Ashley
 Elinor R. Bacon
 Linda A. Baumann
 Nan Beckley
 Mary Bender
 Sue Benson
 Diane Boehr
 Susan and Steven Bralove
 Dr. Robert and Mary Jo Brenner
 Bonnie* and Jere Broh-Kahn
 Louise Budelis
 Donald Burch, III
 James C. Burks and
 Dr. Bette Jane Pappas
 Anne L. Buzalski
 John P. Cahill
 Ellen MacNeille Charles
 Donald J. and Anita P. Cowan
 Captain Joan Darrah and
 Ms. Lynne Kennedy
 Martin Alan "Marty" and
 Belle Negrin Davis
 Joseph P. DiGangi
 John Edelmann and Jeffrey Love
 Vivian B.* and Lisa D. Eggers
 Barbara B. Ehrlich
 Jeri and Gary Epstein
 Skip and Laurette Farmer
 Nancy M. Folger
 Catherine F. and James F.* Fort, Sr.
 Larry Franks and Ellen Berelson
 Becky Fredriksson
 Dr. Helene C. Freeman
 Arlene Friedlander
 Rick and Carol Froehlich
 Steven Garron
 Suzan and Gary Gladstone
 Jon K. Gossett and Alex Urdaneta
 Bob Gronenberg
 Catherine and Christopher
 Guttman-McCabe
 Rita and Wilbur Hadden
 Chris Harris
 Betty Hawthorne
 Dr. JC Hayward
 Vicki J. Hicks
 Richard and Pamela Hinds
 Sallie L. Holder
 Lauren and Glen Howard
 Ann Ingram
 David Insinga and Robert McDonald
 Thomas Jesulaitis

James Johnson and
 Matthew Shepard
 Drs. Susan and Perry Klein
 Dr. Seth A. Koch and
 Barbara Bellman Koch
 Patricia and John Koskinen
 Justin Latus
 Thelma K. Leenhouts
 Herb and Dianne Lerner
 Carol Ann and Kenneth Linder
 John and Patricia Long
 John and Lenora Lynham
 Sandra L. Mabry
 Alison Masters MacTavish
 Wells R. McCurdy
 Alfred Munzer and Joel Wind
 Paul and Nancy Newman
 Marina and David Ottaway
 Laura Peebles
 Amy Phillips
 Robert Pincus
 Michael and Penelope Pollard
 Mr. and Mrs. Thomas J. Reckford
 Paul Rose
 Richard Schwartz* and
 Beth Newburger Schwartz
 Larry Shaw and Richard Freitag
 David E. Shiffrin
 Mark and Merrill Shugoll
 Mike and Patti Sipple
 Leonard Sirota, Eileen Ivey and
 Rachel Sirota
 Molly Smith and
 Suzanne Blue Star Boy
 Dick and Katie Snowdon
 Sheila A. Stampfli
 Aileen and Jack Sullivan
 Terri L. Tedford
 Helene Toiv
 Margaret L. Tomlinson
 Maya Weil
 Val and John Wheeler
 Alexander and Michelle Zajac

*Deceased

BEQUESTS AND GIFTS IN REMEMBRANCE

Anonymous (2)
 Estate of Dr. and Mrs.
 Clement C. Alpert
 Estate of J. Alton and Cynthia Boyer
 Estate of H. Max and
 Josephine F. Ammerman
 Estate of Jan Ellen Balkin
 Estate of Audrey J. Barnett
 Estate of Harry J. Boissevain
 Estate of Henrietta T. Braunstein
 Estate of Dorothy A. Bunevich
 Estate of Mary Lou Calene
 Estate of Patricia Carroll
 Estate of Albert Chaiken
 Estate of Judith Claire
 Estate of Helen G. Coddling
 Estate of Marcus Cohn
 Estate of Israel and
 Augusta Convisser
 Estate of Camille Cook*
 Estate of Robert D. Davis Jr. and
 Henry J. Schalizki
 Estate of Mr. William E. Faragher
 Estate of Zelda Fichandler
 Estate of Donald H. Flanders
 In Memory of Helen W. and
 Felix E. Geiger
 Estate of Ann Gibbons
 Estate of Ezra Glaser
 Estate of George Grizzard
 Estate of Margaret M. Hansen
 Estate of Giselle Hill
 Estate of Joan E. Kain
 Estate of Margot Kelly
 In Memory of Jean Russ Kern and
 Jeannette G. Kern
 Estate of Herbert A. Lindow
 Estate of LaRue R. Lutkins
 Estate of Jeannette Murphy
 Estate of Marianne R. Phelps
 Estate of Suzy Platt
 Estate of Judy Lynn Prince
 Estate of Ms. Jane Rissler
 Estate of Toni A. Ritzenberg
 Estate of Gruine Robinson
 Estate of Hank Schlosberg
 Estate of Eugene Schreiber
 Estate of Helga Tarver*
 Barbara R. Walton Endowment Fund
 for New Playwrights
 Estate of Eric Weinmann
 Estate of Frankie and
 Jerry Williamson

INDIVIDUAL DONORS

THANK YOU FOR YOUR SUPPORT!

Arena Stage gratefully acknowledges the many individuals and families who support the theater's work by contributing to the Annual Fund. These gifts make it possible for the theater to continue presenting high-quality productions and innovative education programs that strengthen the community in which we live.

For more information on the benefits of becoming an Annual Fund contributor, please call the Development Department at 202-600-4177.

The following are members as of October 22, 2024.

OVATION CIRCLE

Anonymous (1)
Decker Anstrom and
Sherry Hiemstra
Margot Kelly*
Arlene and Robert Kogod
Judy Lynn Prince*
The Toni Ritzenberg Fund
for Educational and
Community Outreach
Programs at Arena Stage
Tiffany Sanchez and Reg Brown

FOUNDER'S CIRCLE

Susan and Steven Bralove
Rick and Carol Froehlich
Lola Reinsch and the Reinsch
Pierce Family Foundation
Beth Newburger Schwartz and
Richard Schwartz*

BENEFACTOR'S CIRCLE

Anonymous (1)
Andrew R. Ammerman
Joanne Barker and the
JAKE Foundation
Linda A. Baumann
Michele and Allan Berman
Deborah Bowles
Pam and Richard Feinstein
Bonnie Feld
Mr. and Mrs. David Fisher
Chris and Catherine
Guttman-McCabe
Daniel Hamilton
Sue Henry and Carter Phillips
Dr. Donald Wallace Jones,
Dr. Betty Jean Tolbert Jones
and Tracey Tolbert Jones
Daniel Korengold and
Martha Dippell
Herb and Dianne Lerner
The Revada Foundation of the
Logan Family
B. Thomas Mansbach
David and Martha Martin
Ilene and Steven Rosenthal
Mr. and Mrs.
Richard W. Snowdon
Sheila Stampfli

LEADERSHIP CIRCLE

Anonymous (1)
Janice Adams
Jeff Busch
Susan E. Carter
Anthony Coley
Celandra Deane-Bess
Edgar and Tracy Dobia
Henock Gebreamlak and
Nicholas Goad
Kristen Donoghue and
Jon Hacker
Jeri and Gary Epstein
Stephanie Foster

Larry Franks and Ellen Berelson
Virginia McGehee Friend
Vicki J. Hicks
Alethia Jackson
Raymond Janvier
Ricki and Joel Kanter
Judy and Peter Blum Kovler
Foundation
Daphne Kwok
John and Lenora Lynham
Dr. Jill E. McGovern
Richard and Janice Newman
Melanie and Larry* Nussdorf
Craig Pascal and
Victor Shargal*
Peggy and David Shiffrin
Thalia Sinnamon in memory of
Lyn Sinnamon
Hon. Michael Steele
Karen Zacarias

PRESIDENT'S CIRCLE

Erin and Derek Arrison
Eric Braverman and Neil Brown
Ellen MacNeille Charles
Vivian B.* and Lisa D. Eggers
Evan Henschel
Patti and Mitchell Herman
Richard Johnson
Sheldon and Audrey* Katz
Mark T. Lewellyn
Nancy and Dan Longo
The Robert and Natalie Mandel
Family Foundation
Doris Matsui and Roger Sant
R. Lucia Riddle
William and Linda Rule
Leonard Sirota and Eileen Ivey
Peggy and Alec* Tomlinson
Joseph and Linda Young

PRODUCER'S CIRCLE

Anonymous (1)
Keith and Celia Arnaud
Tom and Loretta Beaumont
Nan Beckley
Richard H. Cleva
John and Linda Derrick
Kathy and Jody Dreyfuss
John Edelmann and Jeff Love
Rachel Frankeny
Meg and John Hauge
Donald E. Hesse and
Jerrilyn Andrews
Thomas Jesulaitis and
Barrie Seidman
Dr. James and Deborah Karesh
Jean and John Lange
Ray Olson
Janis Reed and Jack Requa
Judi and Richard Sugarman
Aileen and Jack Sullivan
Bill and Terry Witowsky

DIRECTOR'S CIRCLE

Anonymous (2)
Jim and Mai Abdo
Dr. and Mrs. C. Wrangle Barth
Judith N. Batty
Dr. Sharon A. Bennett
Sander M. Bieber and
Linda E. Rosenzweig
Richard and Eleanor Bochner
Jere Broh-Kahn
Constance Bohon MD
Blain and Peg Butner
William Caldwell and
Michele Toth
Bonnie C. Carroll and
Roy Cooper
Gail Chambers and Scott Baker
John Chester
Debbie and Adam Cohen
Beth Cunningham and
David Wolfe
James and Dorothy Dake
Belle N. Davis in memory of
Martin "Marty" Davis
Joseph P. DiGangi
Drs. Elliot J. Feldman and
Lily Gardner Feldman
Katherine Ann Gardner
Bill and Linda Garvelink
Michael Greenbaum and
Sherry Liebes
Carol and Bill Gross
Woolf Gross
Susan B. Haight
Laura Hart
Paul R. Henderson
Theo W. Hodge Jr., MD and
Frederick Eugene Taylor, Jr., AIA
David Insinga and
Robert McDonald
Barry Kropf
Thelma K. Leenhouts
Mark Levine and Sara
Imershein
Caroline Lewis
John and Trish Long
Abby Mandel
Steve Mayer and
Vera Oye* Yaa-Anna
Richard and Erin Mills
David Montgomery
Alfred Munzer and Joel Wind
Walter and Kay Oliver
Marina and David Ottaway
James T. Parson, Jr.
Toni and Ronald Paul
Dave Pawlik and
Susan Albertine
Laura Peebles and
Ellen Fingerman
Ann and Terry R. Peel
Mr. Michael Pollard and
Mrs. Penelope Pollard
Gail Povar and Larry Bachorik

Franklin D. Raines and
Denise Grant
Nancy Regan
Talmadge Roberts and
Mary E. Roberts
British Robinson
Jill and Rick Robinson
Trina and Lee Rubenstein
Blair and Sally Ruble
Jeff and Ellen Sandel
Jean Schiro-Zavela and
Vance Zavela
Raymond and
Deborah Sams Sczudlo
Mark and Merrill Shugoll
Dr. and Mrs. Gene Simaitis
Annelise and Robert H. Smith
Ruth and Arne* Sorenson
Robert J. Surovell
Dr. and Mrs. Harvey Sweetbaum
Keith and Jeanette Thackrey
Barbara Toohill
Laura L. Tosi
Shawna Watley
Virginia D. Weber
Glenn Westley and
Jeanne Holzgreffe
Jaan Whitehead
Jon and Sandra Willen
Richard and
Leslie Wojciechowicz
Deborah and David Yaffe
Jane Yanulis
Judy and Leo Zickler

PLAYRIGHT'S CIRCLE

Anonymous (8)
General Clara Adams-ENDER
Julie Alderman Boudreau
The Estate of Dr. and Mrs.
Clement C. Alpert
Dean Amel and Terry Savella
Friend of Arena
Robert C. and Elissa B. Bernius
Lucille A. Bland
David and Judy Bonior
Rita Braver Barnett
Joe and Sue Bredekamp
Candice C. Bryant
Susan and Dixon Butler
William and Kathleen Carey
Dr. Myla Carpenter
Lynne H. Church
Karen and Joseph Coleman
Wilson Compton
Mr. Michael Crosswell
Valerie and John Cuddy
Nancy Dawson
The Charles Delmar Foundation
Angela Dickey and
Patricia Norland
Patricia L. D'Orazio
Dr. Alexandria Edwards
Barbara and David Ehrlich

INDIVIDUAL DONORS

Dr. James Elzy and
Mr. Francis O'Malley
Geraldine Feaster and
Calvin Bethea*
Peter and Alison Fenn
Trudy Fleisher
Lorraine Fleming and
Harry Parrish
Mr. Gary Fontaine
Robert and Carole Fontenrose
The Henry J. Fox Trust
Mr. and Mrs. Davis R. Gamble Jr.
Lenue and Barbara Gilchrist
Amnon and Sue Golan
Gregg H. S. Golden
Janet Hall Graff
Ellie and John Hagner
Richard E. Hardy
Chris Harris
Patricia Harvey
Ms. Margaret Hennessey
Martin and Nene Hill
Richard and Pamela Hinds
Judy Honig and Stephen Robb
Lauren and Glen Howard
Whitney Hubbard
Linda Irizarry
John Iwaniec and Tracy Gray
Harolyn and William Jackson
Arthur Hyland and
Suzanne Jenkins
Lucrecia P. Johnson, Esq.
Jason Johnston
John Keator and
Virginia Sullivan
Cal and Barbara* Klausner
Tuke and Pierce Klemmt
Lauren S. Kogod
Teresa and Richard Kramer
Ashley J. Lawrence
Jim and Sharon Lowe
Vicky Marchand
Lorraine and Craig Martin
Wakefield Martin and
Paula S. Thiede
Mark and Marsha Mazz
Susan Hall McCannell
Robert and Joelen Merkel
Martha Newman
Frank and Linda Nutter
Joe Oppenheimer and
Edith Fraser
Anne Paine and Fowler West
Lauren Pate
Howard and Dorothy Pedolsky
Mazel Pernell
Randy and Kathy Pherson
Paula and William Phillips
Dr. and Mrs. Nathaniel Pitts
Margaret Pollack and
Paula Reed Lynch
Marjorie Lynne Powell
Ane Powers
Lutz Prager and Pat Lark*
Mr. and Mrs.
Thomas J. Reckford
Barbara Riley
Michael P. Rogan and
Susan Schaffer
Gareth Rosenau
Bruce and
Lori Laitman Rosenblum
Emily B. Rouse
Jo Ella Samp
Linda and Arthur Schwartz
Carol Schwartz
Richard and Jacqueline Sellers

Erin P. Shannon
Lisa and Jim Shannon
McAdo Shuler, Jr.
Bobbi and Larry Shulman
Toby A. Silverman
Ken Simonson and
Jan Solomon
Mike and Patti Sipple
Laura Smaligan and
Eric Sandberg-Zakian
Carl Wayne Smith and
Michael Burke
Mignon and Kebharu Smith
Lawrence and Arlene Spinelli
Cecile Srodes
Greig Stewart and
James Hudson
Patricia Stonesifer and
Michael Kinsley
Bill Swedish and Linda Griggs
Eileen and Michael Tanner
Linda and Steuart Thomsen
Mary Vavrina
John and Val Wheeler
Jack and Sue Whitelaw
Ken and Dorothy Woodcock
Richie and Jim Wright
Robert and Anne Yerman
Michael Walker
Jeffrey and Johanna Zinn

LEAD

Anonymous (6)
Barry Abel and Stephen Morris
Nora Abramson and
Dave Nathan
Dr. and Mrs. Nelson Adamson
Garland Allen
Jenna and Bill Allen
Tonia and Scott Anderson
Virginia Anthony
Kathleen and
Lawrence Ausubel
Dr. John Bailey and Mrs.
Juanita O. Coye Bailey
Ronald Bailey and
Pamela Friedman
Michael Baker
Marion S. Ballard
Anna K. Behrensmeyer
Sue Benson
Dava Berkman
Peter and Ellen Berty
Tom Blackburn
Marc Blakeman
Elizabeth L. Blakeslee
Dr. and Mrs. Gerald Borsuk
William and Emily Brittle
Harold R. Bucholtz
S. M. Bumbley
Nancy Chesser and J.M. Rowe
Jo Ann and Wesley Chin
Lisa I. Cholmondely
Francis and Terry Coates
The Manny and Ruthy Cohen
Foundation
Brian Cooke
Joe and Randi Cosentino
Deanna K. Dawson
Lorraine Day
Cynthia J. Decker
Lisa and Tony Delity
Althea Dixon
Kimberly Dixon
Edward Donahue, III
Don Douglas and
Carolynne Weil*

Cheryl Dragoo
John Driscoll
Sue Duncan and Leo Fisher
Mrs. Elizabeth Edgeworth
Rick and Renee Edson
Evelyn and Barry Epstein
David and Ana Evans
Fern Flanagan Saddler
Mr. and Mrs. Michael Flyer
JoEllen and Martin Frost
Richard Gervase and
Stuart Delery
Amy C. Gilbert
Mark* and Sara Goldberg
Paula S. Goldman
John M. Goodman
Bob Gronenberg
Gail Gulliksen
Jack E. Hairston Jr.
The Honorable Robert and
Susan Hale
Robert and Carol Hall
Mr. Lars Hanson and
Ms. Rosanne LeVitre
Mr. and Mrs. Peter D. Hart
Doris Hausser
Shawn C. Helm and
J. Thomas Marchitto
Jill Hill and Julie Hill
Lucia and Fred Hill
Jessica Hirschorn and
Henry Hoard, Jr.
Clarence G. Hoop
Paul and Bonnie Hopler
Drew Huffman
Patricia Jackman and
Stephen L. John
Martha L. Kahn and
Simeon M. Kriesberg
Belinda Kane
Dr. and Mrs. Ron Karpick
Joseph and Jane Keady
Kyle Kerr and Stephen Bique
Michael Kielbiewicz and
Barbara Strong
Kathleen Knepper
Patricia and John Koskinen
Ms. Jane Mary Kwass
Jane Lang
Richard and Cecilia Larkin
Elaine R. Leavenworth
Stuart and Brock Lending
John and Jane Lewis
Carol Ann and Kenneth Linder
Mrs. E. Kathleen Linville
Kenneth C. and
Elizabeth M. Lundeen
Ms. Linda Marks and
Mr. Rafael V. Lopez
Joanne S. Martin
Lou Mayo
Marlene Mayo
Lou Mazeway
Dr. Florence K. Millar
David Mitchell
Robin Mockenhaupt and
Ralph Popp
Steve and Sylvia Moore
Sheila and Ford Newman
R. Frances O'Brien and
Stephen Flott
Doris Parker and Michael Spatz
Jane Passman and Jack Moyser
Stan Peabody
Scott Pearson
Liz Pennisi and Matt Butcher
Anne E. Peret

Judy Perry, Col (USAF Retired)
Wayne and Ursula Quin
Carroll Quinn
Emily and Judith* Regelman
Clyde Relick and Julie Davis
Margaret Rice and Bill Sette
Lynda Robb
June A. Rogul
Helen Ross
Alan and Florence Salisbury
Jean Sammon
Evelyn Sandground and
Bill Perkins, in memory of
Frank and Marta Jager
Molly Smith and
Suzanne Blue Star Boy
Sharon Steele
Dr. Sheila Taube
Elizabeth and Jerome Teles
Ryan Neels Terry and Louis Loh
Dr. Adrienne Thompson Brown
Douglas Trainum in memory of
Peggy Laves Trainum
Judge and Mrs. James T. Turner
Lyman G. Van Nostrand
Dr. Carolyn Peoples Veiga
Roger and Diane Warin
Cameron and
Susan Weiffenbach
George and Patti White
Debbie and Daniel Williams
Robert and Gwendolyn Williams
J. David Willson
Robert Wilson

SUPPORTING ROLE

Anonymous (16)
Susan Absher
Gloria D. Allen
Hon. Frank and
Mrs. Antoinette Almaguer
Victoria Arana
Robert J. Bachman
Mary Barton and
Beth Biegelsen
Janet and David Batlan
Ann Blackman and
Michael Putzel
Edward Blanton and Rusty Lynn
Alex Bogdanovsky and
Elena Shtern
Vincent and Veronica Boles
Nettie Bouchie
Randall A. Bowman
Jan Boyce
Anne Boyden
Cynthia Boyer*
Steven Brady
Valerie Briggs and Peter Kelley
Ms. Carolyn Broussard*
Diane Brown
Kathy Brown in memory of
Ted Bean
Richard Allen Brown
Yvette Benton Bullock
Cynthia Bunton
Susan and Mike Burk
Avery Burns
Donna Butts and William Libro
Sandra and Paul Byrne
Marni Byrum and
Martha McQuade
John Cahill
Jason and Ashley Campbell
Maria Carmona
Ms. Patricia Carter
Carla Cartwright

INDIVIDUAL DONORS

Michael Carty and
Linda Brothers
Cecilia M. Chandler
Allayne and Brian Chappelle
Rese Cloyd
Beth and Ron Cogswell
Jane Cohen
Ann Collins
Brian Collins
James and Ann Connell
Debra J. Cottrell
Paul and Barbara Couture
Johanna S. Cummings in
memory of Ian Cummings
Mr. and Mrs. Philip Currie
Laurie Davis and Joe Sellers
Stephen A. Dean and
Pamela S. Hinds
Dr. Terri Dickerson and
Colonel (Ret) Kevin Hawkins
Clark and Emilie Downs
David Dunn
Teddie Dyson
Jerome Edwards
Barbara Elkus and Roger Poore
Ann Elliott
William E. Elwood
Christopher Ernst
Ralph and Gwendolyn Everett
Catherine Fadel
Gary Felsler
Jill A. Fields
Ben Finzel and Mark Pimble
Phyllis and Marc Fleischaker
Cathy and Donald Fogel
Heather Foley
Allan D. Friedman
Catherine Gahres and
James Woolford
Paul Gamble
Natwar Gandhi
Dr. Kirk Getter
Wayne and Laura Gifford
Eileen M Gleimer
Alvin and Maxine Golub
Gerry and Alan Graham
Palmer and Barry Graham
Ruth B. Gramlich
Madi Green, in memory of
Duff Green III
Maxine Green
Mr. and Mrs.
Abraham Greenstein
Karen T. Grisez
Sue Guenther
Frank Guzzetta and
Paul Manville
Daniel and Therisia Hall
Betsy A. Harris
Rachel Hecht
Cynthia Heckmann
Bert Helfinstein and
Margaret Rodenberg
Connie Heller
Paul Herman and
Karen Goldman
Dorothea Hiltenbrand
Karen Hirakawa
Roger and Neesa Hoskin
John and Debra Howard
Jerry Hungerman
Heather Huyck
Geraldine Inge
Ann Ingram
Smyrna N. Jackson
Paul and Pam Jaikaran
Cheryl Janey Calhoun

Norm and Anita Johnson
Diane Johnson-Quinn and
Vincent Quinn
Kimberly and Tad Johnston
Thelma D. Jones
Trina Jones
Joyce E. Jordan
Thomas Kane
Robbie Katson
Gale Kaufmann
Sylvia S. Kihara
Peter Kimmel and
Stephanie Jackson
Mrs. William Kingsbury
Kenneth and Carol Doran Klein
Mary Lou and Jack Kramer
Paul Kung
Sarah Kyrouac
Mr. and Mrs. James Landberg
Carrie and Howard Langsam
Allan and Sondra Laufer
Robin Lee
Philip and Lisa Leibow
Steve Leinwand and
Ann Lawrence
Paul Levine
Dr. and Mrs. Randall J. Lewis
Shirley Loo
Nga Lopez
Frank and Liz Lostumbo
Joan Lunney
Chris and Christine Magee
Gerald and Madeline Malovany
Martin Malsch and
Jane Axelrad
Harry Manin
Hon. John E. Mansfield
Susan and Dan Mareck
Margaret Marin
Michelle Mason
April Massey
Hans and Marianne Mayr
William McBride and
Susan Caporaso McBride
Anna Therese McGowan
Elizabeth Ann McGrath
Margaret McKelvey and
William Harkins
David McKinney
Patricia McMahon
Sarah McMeans
Terry and Tom Melo
Lenore Meyers
Alan Miller
Sandy Mitchell
Charles and Patricia Moler
Bob and Wendy Morris
Stephen H. Morris and
Jill L. Clark
Robert and Mimi Morse
Helaine G. Morss
Delphine Motley
Marilyn L. Muench
Hedy Nash and John Wetterau
Nick Newlin
William and Louisa Newlin
Jeremy I. Novak
Ms. Laurence Nolan
Charles and Janet Parker
Wilson and Deborah Parran
Bill and Jenny Pate
Ms. Barbara Patocka
Jeanne and Burnie Peters
Margaret and Carl Pfeiffer
Sophia Phillips
Wendell and Kathy Primus

Vincent and Nancy Radosta
Emily Johnson and
Vijay Ramachandran
Howard and Emily Reichel
Catherine Remijan
Maria Farese Rendine
David and Lynn Rickard
Marietta S. Robinson
Dr. Tommie L. Robinson, Jr.
Charles Rohe
Denise A. Rollins
Setsuko Rosen and
Robert Luther
Gene and Shirley Rosenfeld
Sheryl Rosenthal and
Marty Bell
Dr. Bernard and Louise Rostker
Mr. and Mrs. John Sacchetti
Kenneth and Chris Sale
Linda B. Schakel
Dr. Frederick* and Peri Schuyler
Diane E. Seeger
Sandra and David Sellers
Charlotte Selton
Ambassador
Mattie R. Sharpless
Sylvia Shenk
Sally Simms
Luann S. Sinclair
Mary and Charles Sjoquist
Donald M. Smith and
Claire L. Filemyr
Pamela Brown Smith
James Knight, Jr.
Dan Snyder and Rory Austin
Kate Snyder
Rochelle Steinberg (Shellie)
Donald R. and Dorothy T. Stone
Susan and John Sturc
Martha and David Swanson
Ruth Tate
Dennis and Rosalind Thomas
Deborah Thompson
Patricia Thorne
Juergen Tooren
Rita C. Toscano
Roger and Elizabeth Trangsrud
Kathryn Turner
Steve Verna
Geoffrey and Susan Vincent
Ms. Maria Wagner
Michael Waldman & Linda Coe
Howard Walgren and Lee Allen
Pamela Walker
Rudolph and Lillian Watkins
Walter Wentz
Helen White and Andy Leighton
Greg and Mary Whiteman
Bernetta and Kevin Williams
Jean and Sam Williams
Larry and Patti Williams/Pride
Patricia Page Williams
Beverly and Chris With
Beth and John Wright
Edith Wyeth
David Young
Joel and Pamela Zingeser
Victor Zitel

*Deceased

Legend:

Ovation Circle
\$100,000 and above
Founder's Circle
\$50,000–99,999
Benefactor's Circle
\$25,000–49,999
Leadership Circle
\$15,000–24,999
President's Circle
\$10,000–14,999
Producer's Circle
\$6,000–9,999
Director's Circle
\$3,000–5,999
Playwright's Circle
\$1,500–2,999
Lead: \$700–1,499
Supporting Role: \$350–699

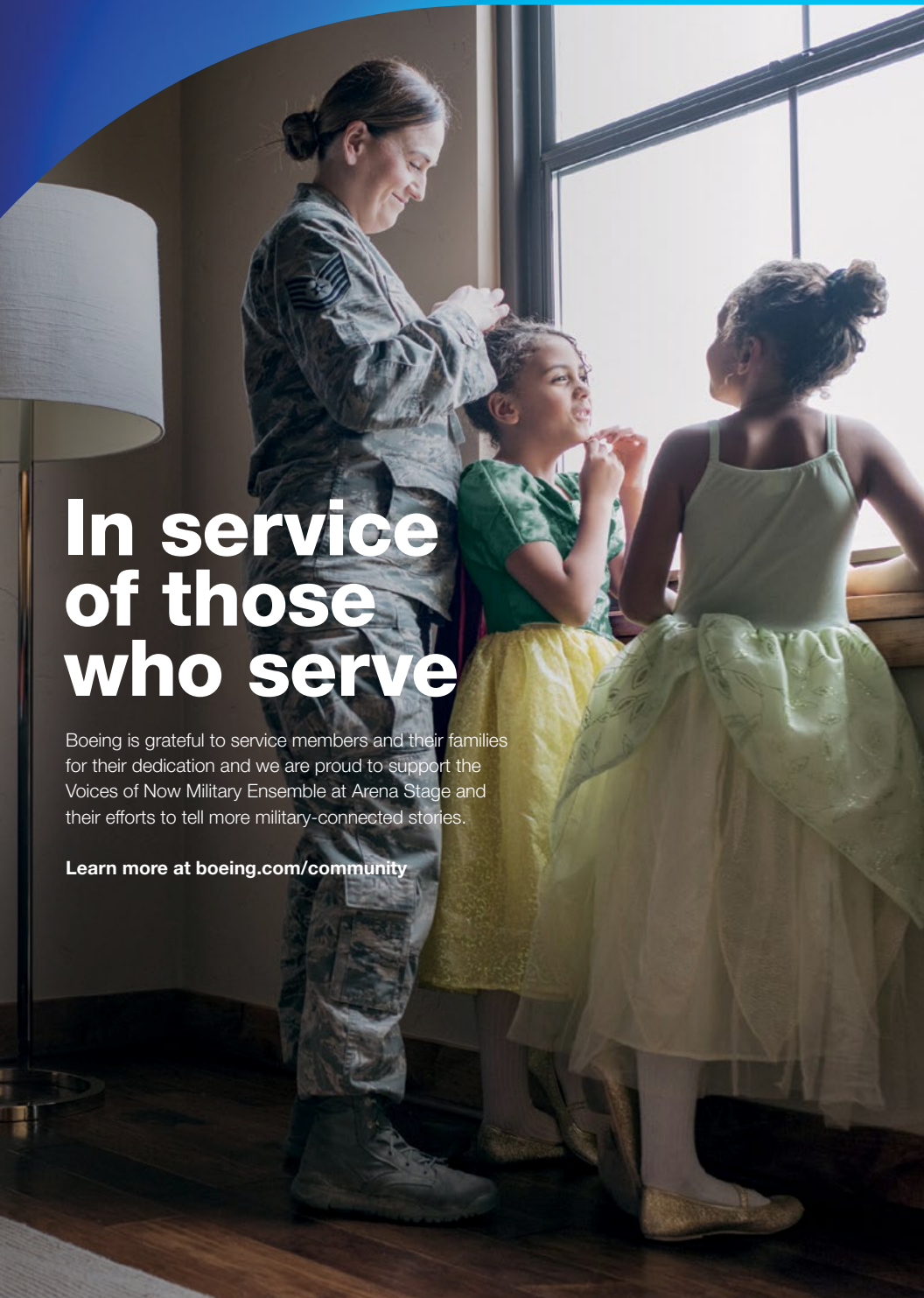
We endeavor to provide a complete listing of all donors in the above categories. However, if your name is not listed, please contact the Development Department at 202-600-4177. We are also grateful to the thousands of other contributors to Arena Stage.



In service of those who serve

Boeing is grateful to service members and their families for their dedication and we are proud to support the Voices of Now Military Ensemble at Arena Stage and their efforts to tell more military-connected stories.

Learn more at boeing.com/community





exelonSM

We Share Your Dream for the Future

Powering our communities is just the beginning. At Exelon, we consider it our responsibility to improve the quality of life for people in the communities where we live, work and serve. Participation in good corporate citizenship is an integral part of our culture, and we inspire our employees to help everyone succeed.



INSTITUTIONAL DONORS

THANK YOU FOR SUPPORTING US!

The vital support Arena Stage receives from many institutions makes our work possible. We thank those institutions who have generously donated \$1,500 or more to our Annual Fund campaign this year. This list represents supporters as of November 18, 2024.

OVATION CIRCLE

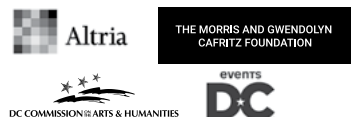


Anonymous

PRESIDENT'S CIRCLE

Alice Shaver Foundation
BakerHostetler LLP
The Bernstein Companies
Boston Consulting Group
Central Parking System
Comcast NBC Universal
The Davis/Dauray Family Fund
Mars Foundation
Pritzker Pucker Family Foundation
S&R Evermay
Southwest Business Improvement District
Venable Foundation

FOUNDER'S CIRCLE



Share Fund

PRODUCER'S CIRCLE

Dimick Foundation
England Family Foundation
Friends of Southwest DC
Gallery 64
Graham Holdings Company
Hattie M. Strong Foundation
JBG Smith Cares
Strategic Education
The Morgan Fund at Seattle Foundation
The Nora Roberts Foundation
The Reef Team of TTR Sotheby's

BENEFACTOR'S CIRCLE



deLaski Family Foundation
William S. Abell Foundation

DIRECTOR'S CIRCLE

ArentFox Schiff
Enterprise Mobility Foundation
The Howard and Geraldine Polinger Foundation

PLAYWRIGHT'S CIRCLE

Potomac Law Group, PLLC
Wawa Foundation

Legend:

Ovation Circle.....\$100,000 and above
Founder's Circle.....\$50,000-\$99,999
Benefactor's Circle.....\$25,000-\$49,999
Leadership Circle.....\$15,000-\$24,999
President's Circle.....\$10,000-\$14,999
Producer's Circle.....\$5,000-\$9,999
Director's Circle.....\$2,500-\$4,999
Playwright's Circle.....\$1,500-\$2,499

LEADERSHIP CIRCLE



Anonymous
The Theodore H. Barth Foundation, Inc.
Dallas Morse Coors Foundation for
the Performing Arts

We endeavor to provide a complete listing of all donors in the above categories. However, if your name is not listed, please contact the Development Department at 202-600-4177. We are also grateful to the thousands of other contributors to Arena Stage, whose names space will not permit us to print.

ARENA STAGE THEATER STAFF

Artistic Director Hana S. Sharif
Executive Producer Edgar Dobie
Founding Director Zelda Fichandler
(1924-2016)

Founding Executive
Director Thomas C. Fichandler
(1915-1997)

Artistic Director
Emeritus Molly Smith

ADMINISTRATION

Chief of Staff Alison Irvin
Executive Assistant Hannah Viederman
Chief Financial Officer Judy Leventhal
Controller John Monnett
Accounting Manager Christopher Murk
Staff Accountant Mark Runion
Accounting Associate Matthew Paige
Payroll & HR Administrator Tyra Picazo
Human Resources Consultant Lighterfly:
Susan Shin, Jill Hulnick, Stella Lim
Auditors Marcum LLP
Legal Counsel ArentFox Schiff LLP;
Kramer Levin Robbins Russell

ARTISTIC

Associate Artistic Director Teresa Sapien
Senior Director, Artistic Strategy
and Impact Reggie D. White
Literary Manager Otis C. Ramsey-Zöe
Casting Director/Line Producer Raiyon Hunter
Artistic Associate Misy Singson
Artistic Fellow Abigail Thomas*
Artistic Intern Amir Shackelford**
Current Commissioned Writers The Bengsons,
Lee Cataluna, Noah Diaz
Lady Dane Figueroa Edici,
Emily Feldman, Idris Goodwin,
Caleen Sinnette Jennings, Deepak Kumar,
Taylor Mac, Octavio Solis, Vera Starbard,
Cheryl West, Lauren Yee,
Karen Zacarias, Zack Zadek

BUILDING OPERATIONS

Director of Facilities
and Operations Keaun Windear
Maintenance Assistant Tevin Smith
Porter Lawrence Wise
Building Technician Harvey Ceasar
Stage Door Attendant Kay Rogers
Environmental and Security Services SWBID

COMMUNITY ENGAGEMENT

Director of Community
Engagement Sean-Maurice Lynch
Camp Programs Director Rebecca Campana
Community Engagement
Producer Tiffany Fulson

Learning Engagement
Managers Katie Campbell,
Grant Emerson Harvey

Training Programs Manager Zoë Hall
Learning Engagement
Coordinator Kayla Warren
Community Partnership
Assistant Douglas Robinson
Senior Community
Engagement Fellow Winta Habtemichael*
School Programs
Fellow Esteban Marmolejo-Suarez*

DEVELOPMENT

Interim Chief
Development Officer Shayla Hines-Graham
Director of Development
Operations and Events Maria Corso
Director of
Strategic Philanthropy R. Wesley Meekins
Interim Director of
Institutional Partnerships Abigail Cady
Membership Manager Lauren Lopaty
Development Operations
and Events Manager Casey Radner
Gift Planning Specialist Maya Weil
Institutional Partnerships
Specialist Mary Helen Pryal
Membership Assistant Oscar León
Development Operations
and Events Assistant Mina Sollars
Development Fellow Nathaniel Huff*
Development Intern Samarion Montgomery**

GENERAL MANAGEMENT

General Manager Alicia Sells
Associate General
Manager Katharine Templeton
Company Manager Trisha Hein
Assistant Company Manager Bowen Fox
General and Production
Management Coordinator Jenna Murphy
Company Management
Assistant Tiffany Ko
General and Company
Management Fellow Rachel Halili*
General and Company
Management Intern Simone Thompson**

INFORMATION TECHNOLOGY & SYSTEMS ADMINISTRATION

Information Technology
Consultant Ren Tec Solutions:
Travis Arbuster (Director),
Tima Theppakdee (Help Desk Tier II),
Steve Han (Security),
Jarrett Poole (System Administrator)
IS Help Desk Eddie Wieland

MARKETING & COMMUNICATIONS

Director of Marketing & Communications..... Ashton Beck
Associate Director of Marketing & Communications..... Ryan Impagliazzo
Public Relations Specialist..... Anastasia St. Hilaire
Content and Email Marketing Specialist..... Gaby Castro-Rodriguez
Graphic Designer Kristopher Ingle
Social Media Specialist..... Steven Franco
Marketing & Communications Administrative Assistant..... Destiny King
Marketing and Media Fellow..... Danait Haddish*
Multimedia Design Fellow Jane Gerrard*

PRODUCTION

Interim Director of Production Ian Pool
Senior Production Manager..... Trevor A. Riley
Assistant Production Manager..... Rachel Crawford

STAGE MANAGEMENT

Resident Production Stage Manager Christi B. Spann

SCENIC

Technical Director Travis Smith
Associate Technical Director Clare Cawley
Scene Shop Supervisor Frank Miller
Stage Supervisor Hannah Martin
Scenic Charge Artist..... Colleen Doty
Scenic Artist..... Misha Rodriguez
Carpenters..... Erick Boscana,
Matthew Grisdela, Julia Junghans,
Max Marshall, Logan McDowell, Lily Rehberg

PROPERTIES

Properties Director Jennifer Sheetz
Associate Properties Director Jonathan Borgia
Head Props Artisan Niell DuVal
Props Artisan Kyle Handziak
Props Assistants Erica Feidelseit, Kayla Prough

LIGHTS

Lighting Supervisor Paul Villalovoz
Assistant Lighting Supervisor..... Olivia Rudd
Electricians..... Scott Folsom, Kelsey Swanson
Nicole Trantum
Lighting Fellow..... Christian Henriquez*

SOUND

Sound and Video Supervisor..... Brian Burchett
Assistant Sound and Video Supervisor Lex Allenbaugh
Master Sound and Video Technician..... Timothy M. Thompson
Sound Technicians..... Alexander Cloud,
Liv Farley, Kirubell Seyoum

COSTUMES

Costume Director..... Joseph P. Salasovich
Associate Costume Director..... Cierra Coan
Drapers..... Seth Gilbert, Erika Krause
First Hands Michele Macadaeg,
Elizabeth Spilsbury
Craftsperson..... Deborah Nash
Wardrobe Supervisor..... Alice Hawfield
Wigs, Hair, and Makeup Supervisor..... Jaime Bagley
Dressers..... Caitlin O'Brien, Sabrina Simmons

SALES & AUDIENCE SERVICES

Senior Director, Sales & Audience Services Isaac Evans
Sales Operations Specialist & Executive Assistant..... Sabrina Zillinger

SALES OFFICE

Associate Director of Sales Services & Operations Caroline Hunt
Junior Tessitura & Ticketing Systems Specialist..... Aaron Hutchens
Managers of Sales Services..... Hannah Damanka,
Olivia Martin

Lead Sales & Audience Services Associate Keshawn Connor
Sales & Audience Services Associates..... Mary Ann Anderson-Garlic,
Colin O'Bryan, Iara Rogers Benchoam,
Gary Shackleford

GROUP SALES

Lead Manager of Group Sales Donald Jolly
Group Sales Coordinator Brandon Ferguson

AUDIENCE SERVICES

Director of Audience Services Andrew Rampy
House Managers..... Ric Birch, Bruce Perry,
Ellie Pline, Zachary Radhuber

Additional Staff for

This Production Stephanie Atkinson,
Alex Butler, Grant Collins, Chris Courtney,
Tristin Evans, Dalton Lamberth, Hayley McGuirl,
Frances Pepper, Melissa Lin Sturges

EVENTS & RENTALS

Manager of Events & Rentals..... Trevor Haren
Events & Rentals Coordinators..... Hiwot Hailu,
Jasmine Martin

MERCHANDISING, FOOD, & BEVERAGE

Associate Director of Merchandising & Guest Experience..... Jody Barasch
Lead Bartender, Hospitality..... Erika Wallace
Lead Bartender, Operations..... Edwin Cortez
Bartenders..... Rachel Hallii, Esteban
Marlmolejo-Suarez, Megan Neftali,
Kaitlyn Sakry, Gary Shackleford,
Abigail Thomas

* 2024/25 Class of the Allen Lee Hughes BIPOC Fellowship Program

** Howard University Creative Arts Administrators Intern

UP NEXT AT ARENA STAGE

DEC 13—22

STEP AFRiKA!



**MAGICAL MUSICAL
HOLIDAY
STEP SHOW**

JAN 31—MAR 16

*Comedy legends
aren't born.
They're made . . .*

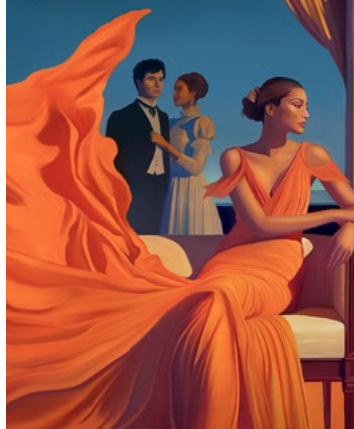
in middle school.



Sarah Silverman's
**THE
BEDWETTER**
A New Musical

FEB 28—MAR 30

**THE AGE OF
INNOCENCE**



SEE IT ALL WITH OUR FLEX PASS!

**MORE SHOWS. MORE SAVINGS.
MORE FLEXIBLE THAN EVER!**



ARENASTAGE.ORG/FLEX

